

# Most Advanced Instrument in the Wavetek Wandel Goltermann Family of LAN Cable Testers.

Now Supports Emerging CAT 6/Class E Standards and More!

LT 8600



The LT 8600 is a 300 MHz Level III high-performance cable tester that exceeds the requirements for emerging CAT 6/Class E testing standards

The competitive nature of the cable installation market demands that you are prepared to complete testing activities for every type of network design. The LT 8600 allows you to perform all required tests, including tests for emerging CAT 6/Class E standards, helping you keep pace with new business opportunities.

#### Price/Performance

Price and performance go hand in hand in today's competitive market place. Wavetek Wandel Goltermann is committed to providing the most flexible testing capabilities to meet your needs.

#### Future Proof Your Equipment Investment

Wavetek Wandel Goltermann's Investment Protection program lets you use the LT 8600 for testing CAT 5/5e and draft CAT 6/Class E standards when you are ready.

#### Supported By The Best

In 1998, Wavetek Corporation and Wandel & Goltermann merged to become the world's second largest manufacturer and distributor of communications test equipment.

- Tests up to 300 MHz exceeding the requirement for emerging CAT 6/Class E standards.
- Performs all advanced Power Sum measurements up to 300 MHz.
- Supports up to 15 different tests individually or in a test suite.
- Supports identification of Distance-to-Fault.
- Options for single-mode and multimode fiber optic and talkset capabilities.
- LT-Record Manager software supports all record keeping, reporting and certification requirements.
- Easy-to-use button interface.
- Investment Protection Program allows you to upgrade to LT 8600.
- Backed by Wavetek Wandel Goltermann's world class customer service.

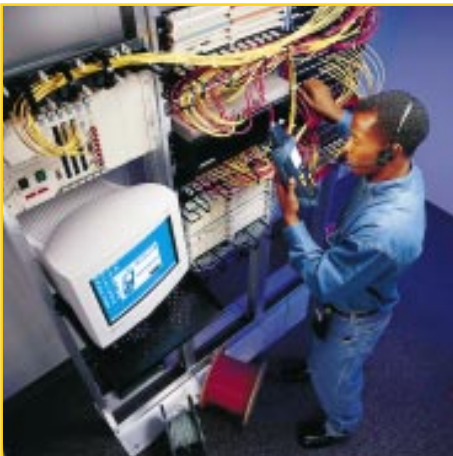
# LT 8600 Specifications

Comprehensive Testing Capabilities For Today and Tomorrow.

SPECIFICATIONS TABLE			
Parameter	Range	Resolution	Accuracy
Length	0-1100 ft.	1 ft.	±(3%+3 ft.)
Delay	0-8000 ns	1 ns	±(3% + 1 ns)
Average Impedance	35-180 Ω	0.1 Ω	±(3% + 1 Ω)
Capacitance (Bulk)	0-100 nF	1 pF or 3 dig	±(2% + 20 pF)
Capacitance (per ft.)	0-100 pF/ft.	0.1 pF	±(2% + 1 pF)
DC Loop Resistance	0-200 Ω	0.1 Ω	±(1% + 2 Ω)
Attenuation	1-300 MHz 0 to limit (FEXT) +5dB	0.1 dB	Level III
NEXT	1-300 MHz 0 to limit (FEXT) +5dB	0.1 dB	Level III
Return Loss	1-300 MHz 0 to limit (FEXT) +5dB	0.1 dB	Level III
ELFEXT	1-300 MHz 0 to limit (FEXT) +5dB	0.1 dB	Level III

Wavetek Wandel Goltermann is the world leader in providing communications testers for telecom networks, enterprise networks, multimedia and wireless networks.

Because of the new combined strength of Wavetek Wandel Goltermann, you can expect superior quality assurance and customer service from Wavetek Wandel Goltermann's family of LAN cable testers.



See Your WWG Distributor For a Free Cable Tester Demonstration Today.

**The Only Cable Testers You'll Ever Need™**

Your Local Representative:

Storage Capacity:	1,500 Autotests
Test Standard	TIA/EIA 568A, TSB67, TSB95
Compliance:	CAT 5/5e, CAT 6 (draft), ISO 11801, Class C, D & E (draft), AS/NZS 3080, IEEE 802.3 Ethernet, IEEE 802.5 Token Ring, EN50173, DIN 44312-1
Cable Types:	UTP/ScTP/FTP; CAT 3/5/5E/6; ISO C/D/E (Link & Channel) IBM STP Type 1,2,6, Coax
Dimensions:	10" x 4.25" x 2.5" (Display & Remote) 250mm x 108mm x 64mm
Weight:	1.75 lb (800g)-display 1.6 lb (728g)-remote
Battery Packs:	NiMH (rechargeable)
Typical Oper. Life (Battery):	8 hrs
Max. Operating Temp:	0°C - 50°C
Max. Storage Temp:	-20°C to +70°C
Humidity:	5 - 90% noncondensing

## ACCESSORIES AND OPTIONS.

LT86SRA	Additional Remote Handset
LT8CHANNEL	Set of 2 Channel Link Adapters
LT8110	Set of 2 110-Block Adapters
LT8IBMA	Set of 2 Token-Ring Adapters
LT8COAXA	Kit Coaxial Adapters
LT8BTCHG120	120V dual-bay quick battery charger
LT8BTCHG240	240V dual-bay quick battery charger
LT8DCCA	Deluxe hard-shell carrying case
LT8TALKSET	Set of 2 earphone/microphone headsets
LT8BATTPACK	Extra NiMH battery
LT8KIT	Professional installer's kit (Includes all of above and (2) extra batteries)
FiberKit+850	Fiber optic cable test kit: Includes power meter and 850nm Multimode LED light source modules, ST adapters, user guide, and case
FiberKit+MM	Same as above except with Dual Wavelength 850nm/1300nm LED Light Source module
FiberKit+ALL	Includes all of +MM kit above, plus 1310nm and 1550nm Single-Mode laser light source modules
542SP	Tone sensing speaker probe

**Wavetek  
Wandel  
Goltermann  
Sales Offices**

### North & South America

9145 Balboa Avenue  
San Diego, CA 92123, U.S.A.  
Tel: (1) 858-279-2955  
Fax: (1) 858-565-9558  
Toll free: (800) 854-2708

### Germany

Tel: (49) 89-996-410  
Fax: (49) 89-996-41160

### Asia

Tel: (61) 3 9690 6700  
Fax: (61) 3 9690 6750

### United Kingdom

Tel: (44) 1603-256-600  
Fax: (44) 1603-256-762

### Web Site:

[www.wwg-solutions.com](http://www.wwg-solutions.com)

### E-mail:

[lansupport@wwg-solutions.com](mailto:lansupport@wwg-solutions.com)