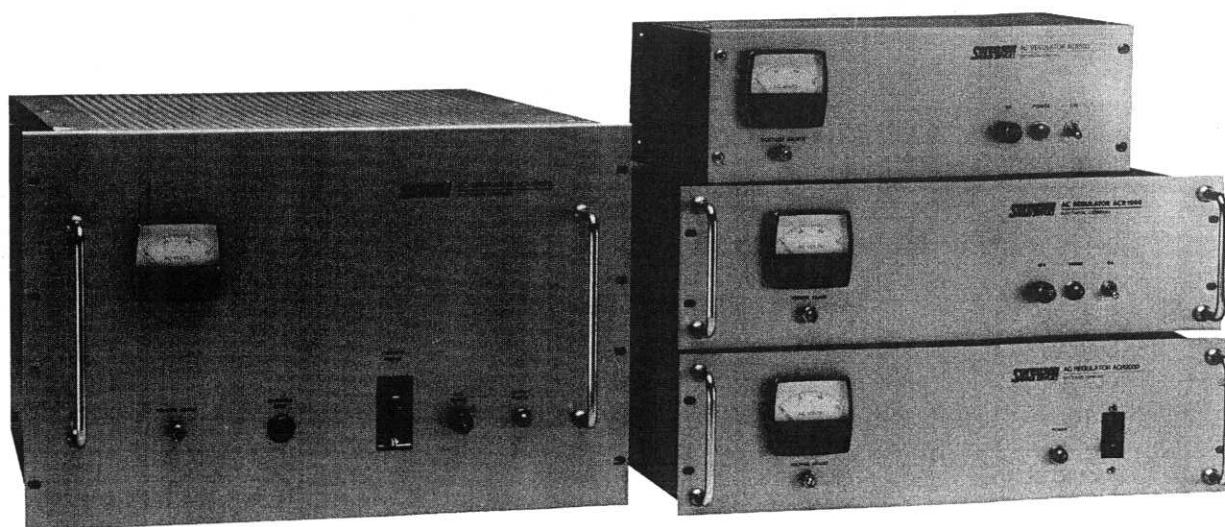


Solid State AC Line Voltage Regulators 0.5 to 10 kVA, ACR Series

High efficiency, precisely controlled ac output (94 to 130 Vac) in 7 models with power levels of 0.5 to 10 kVA . . . and ACR Series ac line voltage regulators provide it with up to 95% efficiency.

- 7 models, 94-130 Vac single phase operation with power levels 0.5 to 10 kVA
- High efficiency, 84-94% depending on model
- Fast response time
- 50/60 Hz operation without derating
- Insensitive to line frequency deviations
- Adjustable output voltage
- Remote programming
- Remote sensing
- Electronic current limiting permits operation with tungsten lamp or small motor loads
- Three phase operation by multi-unit configuration
- 5-year warranty



OUTPUT

Voltage:
110-120 Vac single phase, adjustable.

Regulation:
±0.1% line or load on models 0.5 to 3 kVA for full load change or ±10% line voltage change. ±0.15% line or load for 5 kVA and over.

Resolution:
0.05% of output voltage (E_o).

Power Factor:
Unity to zero lag. On 7.5 kVA and larger models, input voltage range is reduced to 100-130 Vac for power loads below 0.7 lagging.

Harmonic Distortion:
3% maximum measured at nominal 60 Hz or 50 Hz (introduced by regulator).

Response Time:
30 ms (50 ms for 0-7.5 kVA and over)

Stability:
0.05% for 8 hours after 30 minute warm-up time.

Remote Sensing:
1.5 V maximum drop per load line.

Current Limiting:
Factory set at 120% of rated current. Consult manual for details on heavy overloads and short-circuits.

Temperature Coefficient:
0.015% of E_o/°C, for models 0.5 to 3 kVA.
0.03% of E_o/°C for 5 kVA and over.

INPUT

Voltage:
94-130 Vac single phase. Momentary input surges 91-142 Vac single phase.

Frequency:
47-53 Hz or 57-63 Hz operation. Factory set for 57-63 Hz.

OPERATING DATA

Ambient Temperature Range:
0°C to +50°C.

Storage Temperature Range:
-40°C to +85°C.

Efficiency:
84-94% depending on model.

Remote Programming:
10 ohms/volt.

Remote Sensing:
1.5 V max. drop per load lead.

ACR ACCESSORIES

Rack Mounting Adapter:
19" (482.6 mm), mounting adaptor for ACR 500. Add RP7 to model number and consult local sales representative for price.

Cabinet Style Side Enclosures:
For self-contained bench use. Kit available for 0-3 kVA models and over. Add CSE to model number and consult local sales representative for price.

Model Specifications

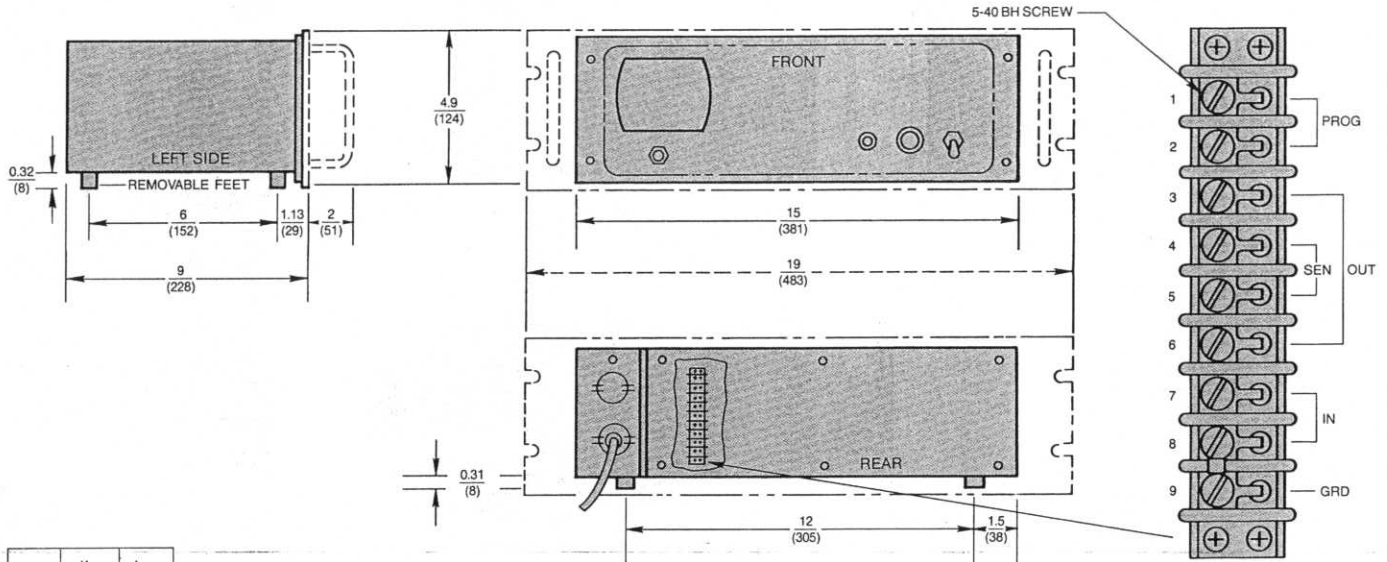
Model	Output Power (kVA)	ac Input Current (Max)	Efficiency (Full VA) %	Case
ACR 500	0-0.5	7	84	I
ACR 1000	0-1	14	86	II
ACR 2000	0-2	26	88	III
ACR 3000	0-3	39	90	III
ACR 5000	0-5	63	92	III
ACR 7500	0-7.5	94	93	IV
ACR 10,000	0-10	123	94	IV



Specifications subject to change without notice.

ACR Series Dimensional Drawings

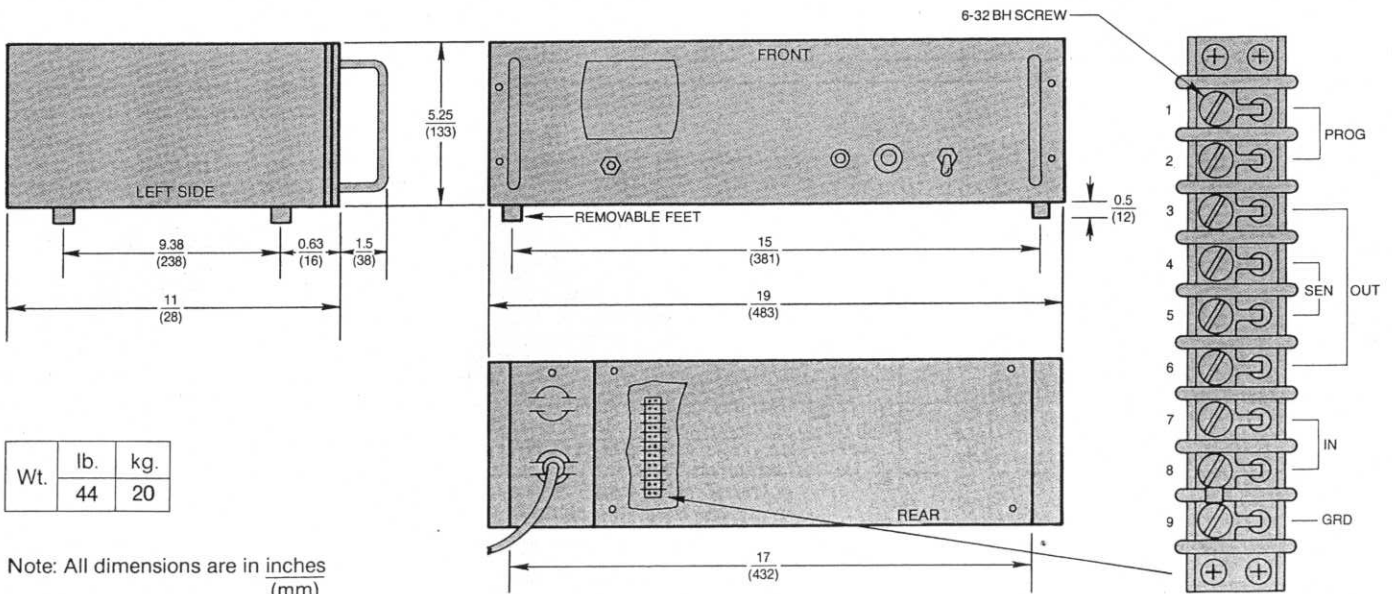
CASE I



Wt.	lb.	kg.
	29	13

OPTIONAL 19 INCH RACK ADAPTER IS AVAILABLE FOR THIS MODEL. ORDER ADAPTER #RP7. (SEE DOTTED LINES ABOVE)

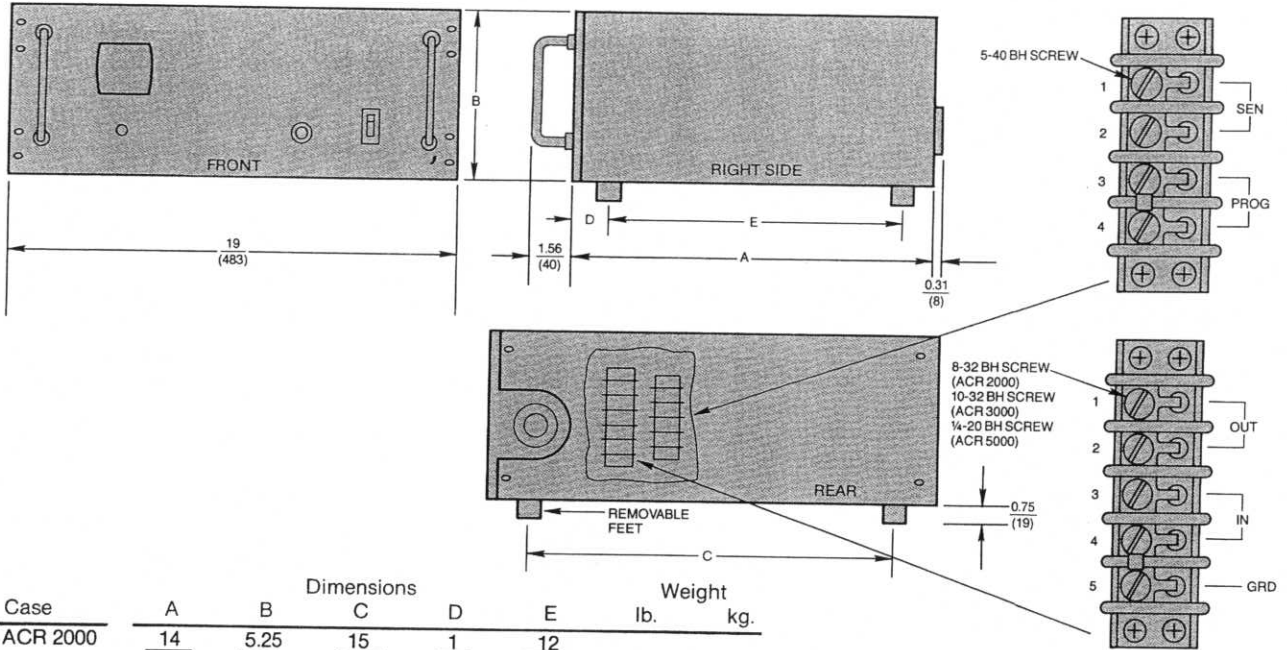
CASE II



Wt.	lb.	kg.
	44	20

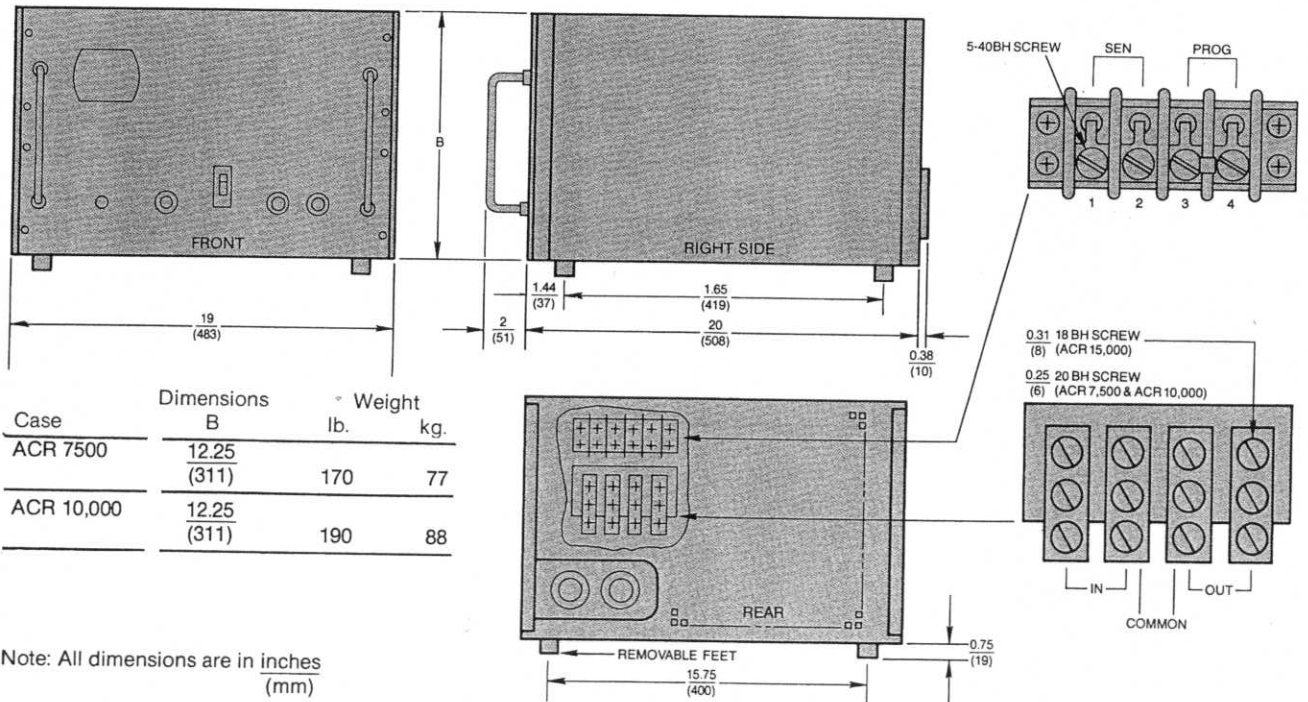
Note: All dimensions are in inches (mm)

CASE III



Case	Dimensions					Weight	
	A	B	C	D	E	lb.	kg.
ACR 2000	14 (356)	5.25 (133)	15 (361)	1 (25)	12 (305)	64	29
ACR 3000	15 (381)	7 (178)	14.25 (214)	2 (51)	14.25 (362)	84	38
ACR 5000	20 (508)	7 (178)	14.25 (214)	2 (51)	14.25 (362)	143	65

CASE IV



Case	Dimensions	Weight	
	B	lb.	kg.
ACR 7500	12.25 (311)	170	77
ACR 10,000	12.25 (311)	190	88

Note: All dimensions are in inches
(mm)