

R&S®ZNLE

Vector Network Analyzer

Measurements as easy as ABC



R&S®ZNLE Vector Network Analyzer At a glance

The R&S®ZNLE makes vector network analyzer measurements as easy as ABC: easy to configure, easy to calibrate, easy to measure. The renowned high-quality design, an innovative user interface and its compact size make the R&S®ZNLE ideal for basic VNA applications.

The R&S®ZNLE is a two-port vector network analyzer that can be used for bidirectional measurements of S-parameters S_{11} , S_{21} , S_{12} and S_{22} on passive components. Ordering the R&S®ZNLE requires only two decisions: the frequency range and whether or not you need a GPIB interface.

The analyzer is available with a frequency range of 1 MHz to 3 GHz (R&S®ZNLE3) or 1 MHz to 6 GHz (R&S®ZNLE6). The optional GPIB interface lets you connect a controller to remotely control the R&S®ZNLE. As a standalone instrument, the R&S®ZNLE does not require an external PC to configure the setup. You can start measuring immediately after you switch on the instrument.

Key features

- Frequency range from 1 MHz to 3 GHz or 1 MHz to 6 GHz
- Two-port vector network analyzer with a full S-parameter test set for bidirectional measurements on passive components
- Wide dynamic range of up to 120 dB (typ.)
- Measurement bandwidths from 1 Hz to 500 kHz
- Fast measurements, i.e. 8.7 ms for 401 points (100 kHz IFBW, 200 MHz span, corr. off)
- Compact size (depth 24 cm) and low weight (6 kg)
- Standalone instrument with 10.1" WXGA touchscreen
- Windows 10 operating system



R&S®ZNLE

Vector Network Analyzer

Benefits and key features

An economical instrument with solid performance

- ▮ Compact vector network analyzer
- ▮ Low trace noise for high accuracy
- ▮ High measurement speed

▷ [page 4](#)

User interface with multi-touchscreen

- ▮ Wide 10.1" WXGA touchscreen
- ▮ Clearly structured user interface
- ▮ Undo/redo softkey for user-friendly operation
- ▮ Fully integrated context-sensitive help menu

▷ [page 5](#)

Standard instrument for use in a lab

- ▮ Calibration units for quick calibration
- ▮ De/embedding functionality and fixture compensation
- ▮ Remote controllable with LAN and GPIB option

▷ [page 8](#)

An economical instrument with solid performance

The R&S®ZNLE is a plug-and-play vector network analyzer containing everything needed to start a measurement. With a fully integrated powerful PC platform running the Windows 10 operating system, the R&S®ZNLE is a complete standalone analyzer. The solid-state hard disk delivers fast boot time and the reliability required for demanding applications. Configure measurements right on the R&S®ZNLE and save valuable bench space since there is no need for a mouse, keyboard and external monitor. Simply plug in the instrument and start measuring.

Compact vector network analyzer

Vector network analyzers such as the R&S®ZNLE characterize electronic networks by measuring the magnitude and phase of S-parameters. Featuring an instrument depth of less than 24 cm and weighing only around 6 kg, the R&S®ZNLE is the most compact instrument in its class.

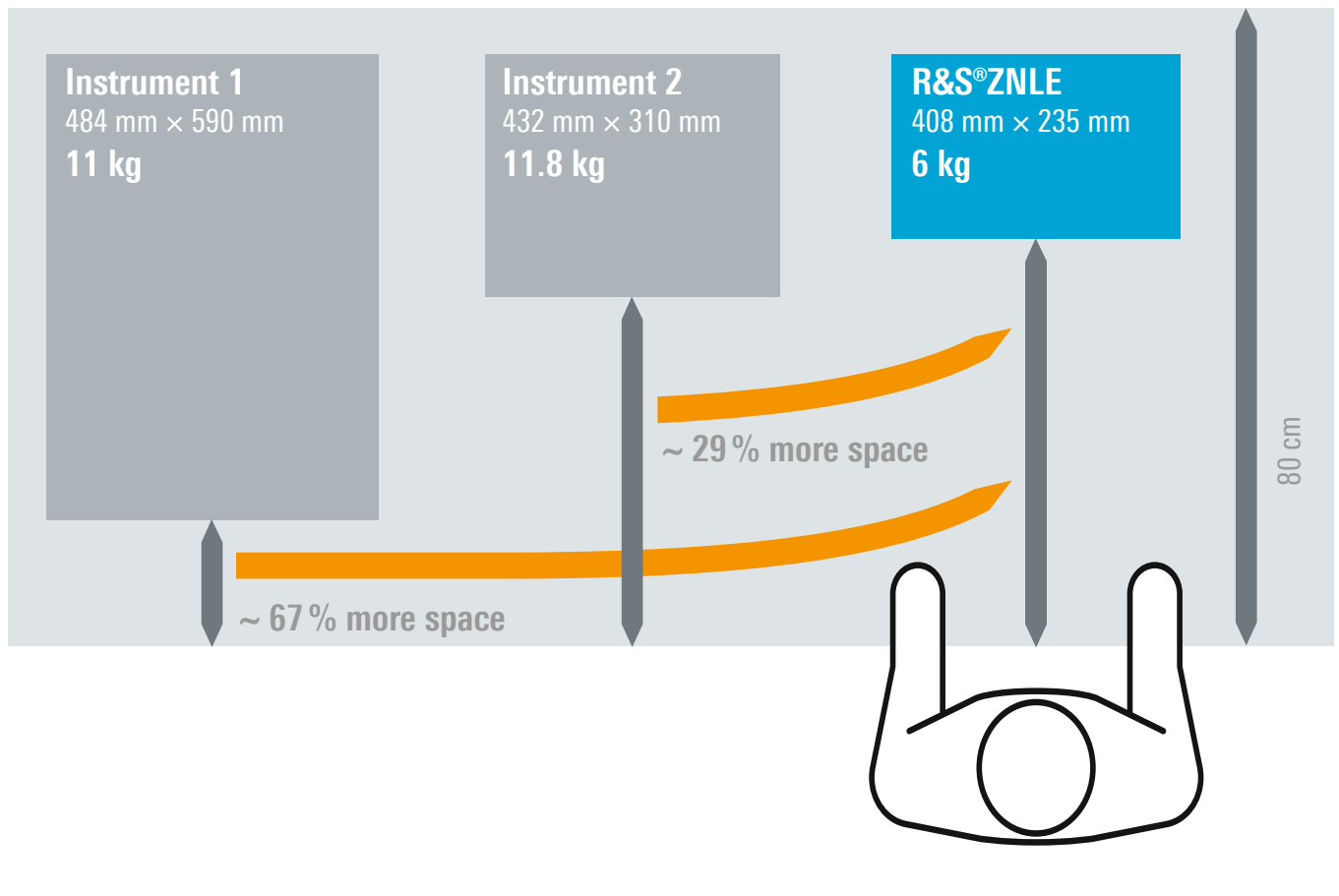
Low trace noise for high accuracy

The R&S®ZNLE offers a low trace noise of typ. 0.001 dB (at 10 kHz measurement bandwidth). This allows highly accurate, stable and repeatable measurements even at wider IF bandwidths. Using larger measurement bandwidths, the R&S®ZNLE can perform faster measurements while still delivering excellent trace stability.

High measurement speed

The R&S®ZNLE is up to 10 times faster than similar instruments. With a measurement speed of 9.6 ms for 201 points (100 kHz IFBW, 200 MHz span, full two-port calibration) and fast LAN or IEC/IEEE data transfer, the R&S®ZNLE is ideal for your everyday testing needs.

Comparison of the needed work bench space of different vector network analyzers



User interface with multi-touchscreen

Wide 10.1" WXGA touchscreen

The wide 10.1" multi-touchscreen is perfect for displaying setups and arranging measurements as required by the current application. Simply drag and drop to adapt the layout to your needs. The multi-touch capability of the R&S®ZNLE lets you do more than just move the traces around with the touch of a finger. You can also use gesturing to zoom in and out.

Clearly structured user interface

The R&S®ZNLE features a user interface that is simple and clearly structured. Configure measurements in just a few steps. Drag and drop traces, channels and diagrams to achieve your ideal layout. Save, reload and switch between different setups with just a few screen taps.

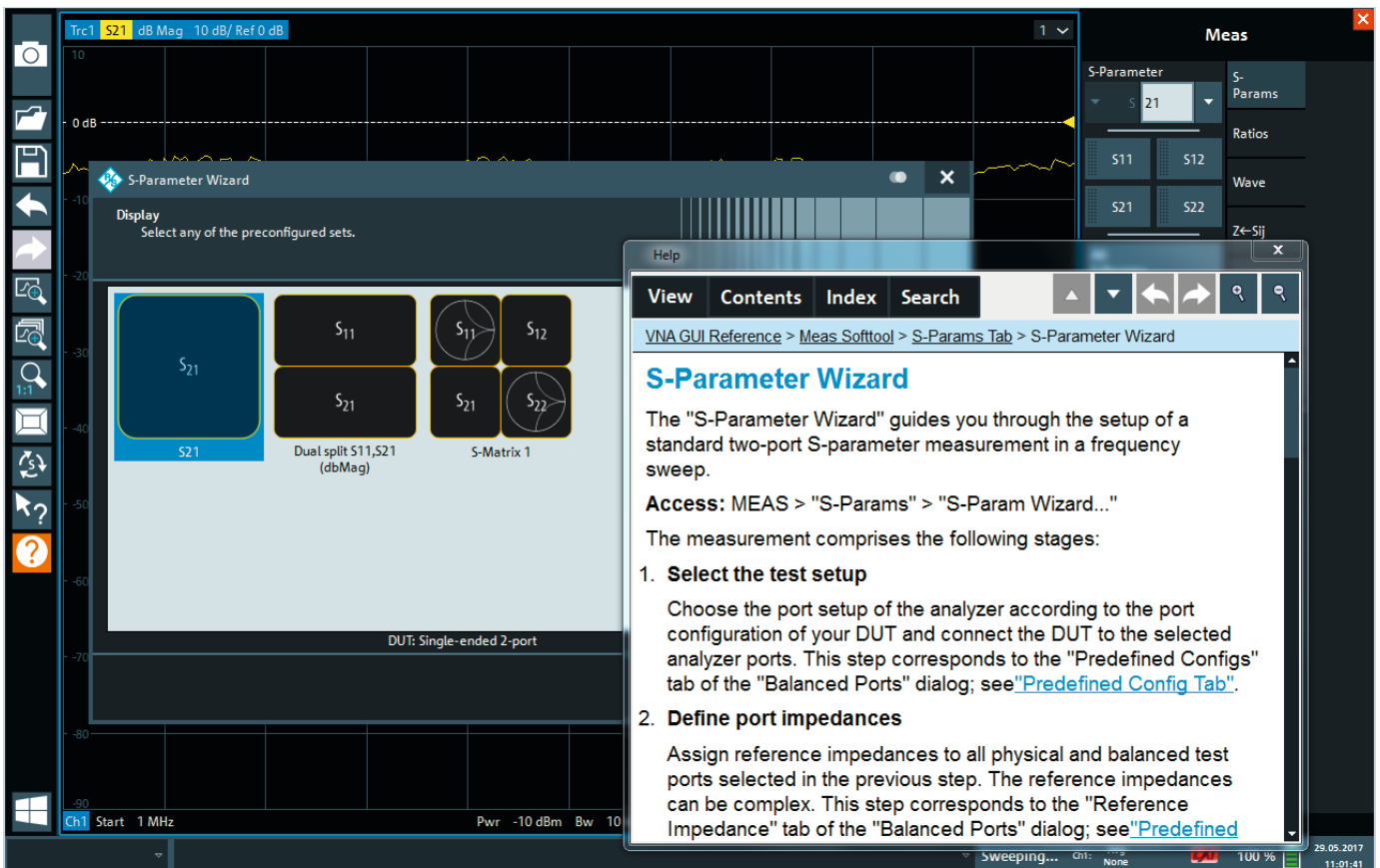
Undo/redo softkey for user-friendly operation

Use the undo and redo softkeys to cancel and restore measurement configurations. Check the influence of a measurement setting and revise it quickly, without having to reconfigure the entire measurement. To restart a setup from scratch, just press the Preset key.

Fully integrated context-sensitive help menu

Thanks to the fully integrated help menu, help is just a click away. In every dialog window, the R&S®ZNLE has a help button that takes you directly to the relevant section of the user manual. The help softkey is located on the left side of the display and can be accessed at any time. An integrated search function lets you quickly find different topics and functions.

Overview of the R&S®ZNLE user interface. Here the wizard for easy configuration of S-Parameters is opened as well as the context-sensitive help menu.



Front panel overview

10.1" high-resolution display

- 1280 × 800 pixel resolution

Toolbar

- With standard application functions like print, save/open file, undo, redo, help

System keys

- For setup, presets, settings etc.

Two USB 2.0 ports

- For storage media
- For connecting accessories

Instrument status bar



Softkey bar

- Quick access to key tools
- Hardware settings at a glance

Numerical keypad

- With unit keys for frequency and level

Function keys

Control knob

Port 1

Port 2/RF input



Standard instrument for use in a lab

In development, it is often necessary to quickly measure passive components. The R&S®ZNL E not only delivers solid RF performance, it also offers features that make your life easier.

Calibration units for quick calibration

The R&S®ZNL E calibration wizard guides you through the calibration process. Manual calibration kits and automatic calibration units are supported.

The analyzer's automatic calibration unit minimizes the time needed to perform a full system error correction. The calibration unit is ready for use right after it is connected to the R&S®ZNL E. It only takes a few steps to calibrate the setup. This is especially an advantage in production environments, helping you save time and maximize throughput.

The following calibration procedures are available:

- ▮ Reflection normalization open or short
- ▮ Reflection OSM (OSL)
- ▮ Enhanced reflection normalization OM or SM
- ▮ Transmission normalization (response calibration)
- ▮ Transmission normalization both (response calibration)
- ▮ One path two ports
- ▮ TOSM (SOLT)
- ▮ UOSM (only with calibration unit)

De/embedding functionality and fixture compensation

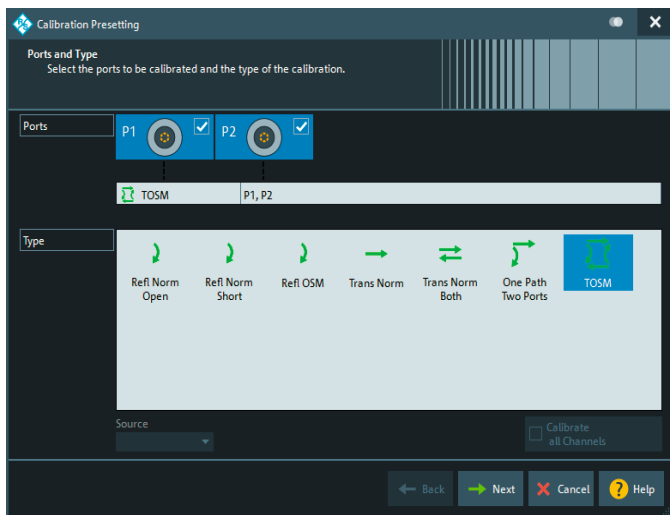
It is often necessary to characterize single components that are specified together with a matching network. The R&S®ZNL E can embed the DUT into virtual matching networks to achieve realistic conditions when simulating the DUT in its operational environment. The R&S®ZNL E offers a choice of predefined matching network topologies. It is also possible to read *.s2p files into the R&S®ZNL E and use them for embedding/deembedding.

The fixture compensation feature corrects the measurement results by compensating for the effect of a test fixture.

Remote controllable with LAN and GPIB option

The R&S®ZNL E can be remote controlled via the integrated LAN interface. The optional GPIB interface lets you connect a controller to remotely control the R&S®ZNL E. Data is transmitted bidirectionally on the 8-bit parallel bus. The data measured during a sweep is transferred to the controller while the next sweep is in progress. As a result, the R&S®ZNL E has a virtually negligible data transfer time.

The calibration wizard provides an overview of the possible calibration methods for easy selection.



The fixture compensation menu offers a good overview of all available compensation methods.



Specifications in brief

| Specifications in brief | | |
|------------------------------|---|---|
| Frequency range | R&S®ZNLE3 | 1 MHz to 3 GHz |
| | R&S®ZNLE6 | 1 MHz to 6 GHz |
| Measurement time | 201 points, 100 kHz IFBW, 200 MHz span, full two-port calibration | 9.6 ms |
| Data transfer | IEC/IEEE (201 points) | 3.0 ms (typ.) |
| | HiSLIP with 1 Gbit/s LAN | typ. 2.5 ms |
| Dynamic range | 10 Hz measurement bandwidth | up to 120 dB (typ.) |
| Output power | | up to +2 dBm (typ.) |
| Measurement bandwidths | | 1 Hz to 500 kHz (in steps of 1/1.5/2/3/5/7) |
| Frequency resolution | | 1 Hz |
| Measurement points per trace | | 1 to 5001 |
| Operating system | | Windows 10 |

The R&S®ZNLE saves a lot of space on the work bench for measurements setups, e.g. to tune filters.



Ordering information

| Designation | Type | Order No. |
|---|--------------|-----------------|
| Base Unit | | |
| Vector Network Analyzer, 1 MHz to 3 GHz, two ports, N(f) | R&S®ZNLE3 | 1323.0012.53 |
| Vector Network Analyzer, 1 MHz to 6 GHz, two ports, N(f) | R&S®ZNLE6 | 1323.0012.56 |
| Options | | |
| GPIB Interface | R&S®FPL1-B10 | 1323.1890.02 |
| Accessories | | |
| Calibration Kit | | |
| Calibration Kit, N, 50 Ω, 0 Hz to 3 GHz | R&S®ZCAN | 0800.8515.52 |
| Calibration Kit, N (m), 50 Ω, 0 Hz to 9 GHz | R&S®ZV-Z170 | 1317.7683.02 |
| Calibration Kit, N (f), 50 Ω, 0 Hz to 9 GHz | R&S®ZV-Z170 | 1317.7683.03 |
| Calibration Kit, 3.5mm (m), 50 Ω, 0 Hz to 15 GHz | R&S®ZV-Z135 | 1317.7677.02 |
| Calibration Kit, 3.5mm (f), 50 Ω, 0 Hz to 15 GHz | R&S®ZV-Z135 | 1317.7677.03 |
| Calibration Unit | | |
| Calibration Unit, 2 Ports, N(f), 100 kHz to 8.5 GHz | R&S®ZN-Z151 | 1317.9134.72 |
| Calibration Unit, 2 Ports, SMA(f), 100 kHz to 8.5 GHz | R&S®ZN-Z151 | 1317.9134.32 |
| Cables | | |
| N (m)/N (m), 50 Ω, length: 0.6 m/0.9 m, 0 Hz to 18 GHz | R&S®ZV-Z191 | 1306.4507.24/36 |
| N (m)/3.5 mm (m), 50 Ω, length: 0.6 m/0.9 m, 0 Hz to 18 GHz | R&S®ZV-Z192 | 1306.4513.24/36 |
| Accessories | | |
| Protective Hard Cover | R&S®FPL1-Z1 | 1323.1960.02 |
| Transport Bag, transparent cover | R&S®FPL1-Z2 | 1323.1977.02 |
| Carrying vest holster | R&S®FPL1-Z3 | 1323.1683.02 |
| Anti-glare film | R&S®FPL1-Z5 | 1323.1690.02 |
| Rack mount kit | R&S®FPL1-Z6 | 1323.1954.02 |

| Warranty | | |
|---|---------|---|
| Base unit | | 3 years |
| All other items ¹⁾ | | 1 year |
| Options | | |
| Extended Warranty, one year | R&S®WE1 | Please contact your local Rohde & Schwarz sales office. |
| Extended Warranty, two years | R&S®WE2 | |
| Extended Warranty with Calibration Coverage, one year | R&S®CW1 | |
| Extended Warranty with Calibration Coverage, two years | R&S®CW2 | |
| Extended Warranty with Accredited Calibration Coverage, one year | R&S®AW1 | |
| Extended Warranty with Accredited Calibration Coverage, two years | R&S®AW2 | |

¹⁾ For options that are installed, the remaining base unit warranty applies if longer than 1 year. Exception: all batteries have a 1 year warranty.

From pre-sale to service. At your doorstep.

The Rohde & Schwarz network in over 70 countries ensures optimum on-site support by highly qualified experts. User risks are reduced to a minimum at all stages of the project:

- ▮ Solution finding/purchase
- ▮ Technical startup/application development/integration
- ▮ Training
- ▮ Operation/calibration/repair



Service that adds value

- | Worldwide
- | Local and personalized
- | Customized and flexible
- | Uncompromising quality
- | Long-term dependability

Rohde & Schwarz

The Rohde & Schwarz electronics group offers innovative solutions in the following business fields: test and measurement, broadcast and media, secure communications, cybersecurity, monitoring and network testing. Founded more than 80 years ago, the independent company which is headquartered in Munich, Germany, has an extensive sales and service network with locations in more than 70 countries.

Sustainable product design

- | Environmental compatibility and eco-footprint
- | Energy efficiency and low emissions
- | Longevity and optimized total cost of ownership

Certified Quality Management

ISO 9001

Certified Environmental Management

ISO 14001

Rohde & Schwarz GmbH & Co. KG

www.rohde-schwarz.com

Rohde & Schwarz training

www.training.rohde-schwarz.com

Regional contact

- | Europe, Africa, Middle East | +49 89 4129 12345
customersupport@rohde-schwarz.com
- | North America | 1 888 TEST RSA (1 888 837 87 72)
customer.support@rsa.rohde-schwarz.com
- | Latin America | +1 410 910 79 88
customersupport.la@rohde-schwarz.com
- | Asia Pacific | +65 65 13 04 88
customersupport.asia@rohde-schwarz.com
- | China | +86 800 810 82 28 | +86 400 650 58 96
customersupport.china@rohde-schwarz.com

R&S® is a registered trademark of Rohde & Schwarz GmbH & Co. KG

Trade names are trademarks of the owners

PD 5215.1882.12 | Version 01.00 | June 2017 (as)

R&S®ZNLE Vector Network Analyzer

Data without tolerance limits is not binding | Subject to change

© 2017 Rohde & Schwarz GmbH & Co. KG | 81671 Munich, Germany



5215188212