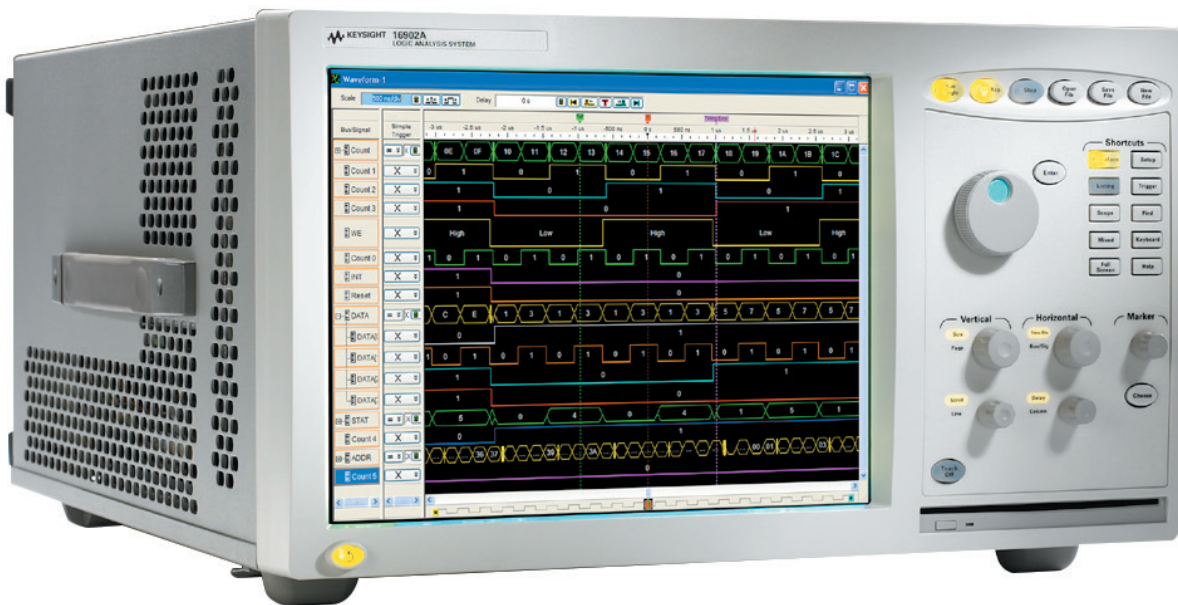


Keysight B4655A FPGA Dynamic Probe for Xilinx

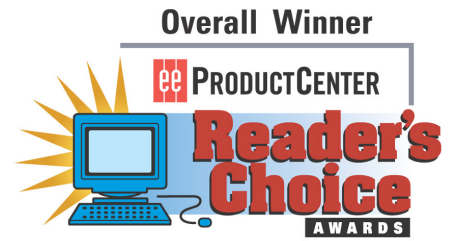
Data Sheet



The Challenge

You rely on the insight a logic analyzer provides to understand the behavior of your FPGA in the context of the surrounding system. A typical approach is to take advantage of the programmability of the FPGA to route internal nodes to a small number of physical pins that a logic analyzer can measure. While this is a very useful approach, it has significant limitations.

- Since pins on the FPGA are typically an expensive resource, there are a relatively small number available for debug. This limits internal visibility (i.e. one pin is required for each internal signal to be probed).
- When different internal signals need to be accessed you must change your design to route these signals to pins. This can be time consuming and can affect the timing of the FPGA design.
- Finally, the process required to map the signal names from the FPGA design to the logic analyzer setup is manual and tedious. When new signals are routed out, the need to manually update these signal names on the logic analyzer takes additional time and is a potential source of confusing errors.



Electronica, 2004

A Better Way

Collaborative development between Keysight Technologies, Inc. and Xilinx have produced a faster and more effective way to use your logic analyzer to debug FPGAs and the surrounding system. The Keysight FPGA dynamic probe, used in conjunction with an Keysight logic analyzer, provides the most effective solution for simple through complex debugging.

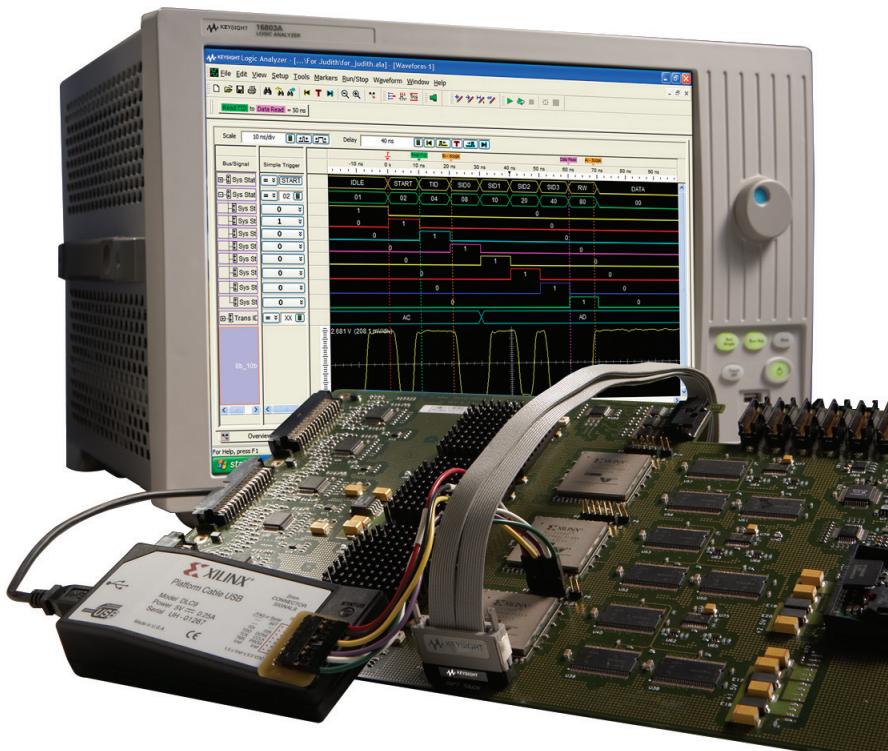


Figure 1. The FPGA dynamic probe application endows your logic analyzer with unique productivity enhancements to find problems more quickly.

Debug Your FPGAs Faster and More Effectively with a Logic Analyzer

The Keysight FPGA dynamic probe, used in conjunction with a Keysight logic analyzer, provides the most effective solution for debugging problems [simple through complex]. The FPGA dynamic probe lets you:

- **View internal activity** – With a logic analyzer, you are normally limited to measuring signals at the periphery of the FPGA. With the FPGA dynamic probe, you can now access signals internal to the FPGA. You can measure up to 128 internal signals for each external pin dedicated to debug, unlocking more visibility into your design than you ever had before.
- **Make multiple measurements in seconds** – Moving probe points internal to an FPGA used to be time consuming. Now, in less than a second, you can easily measure a different set of internal signals – without design changes. FPGA timing stays constant when you select new sets of internal signals for probing.
- **Leverage the work you did in your design environment** – The FPGA dynamic probe is the industry’s first tool that maps internal signal names from your FPGA design tool to your logic analyzer. Eliminate unintentional mistakes and save hours of time with this automatic setup of signal and bus names on your logic analyzer.

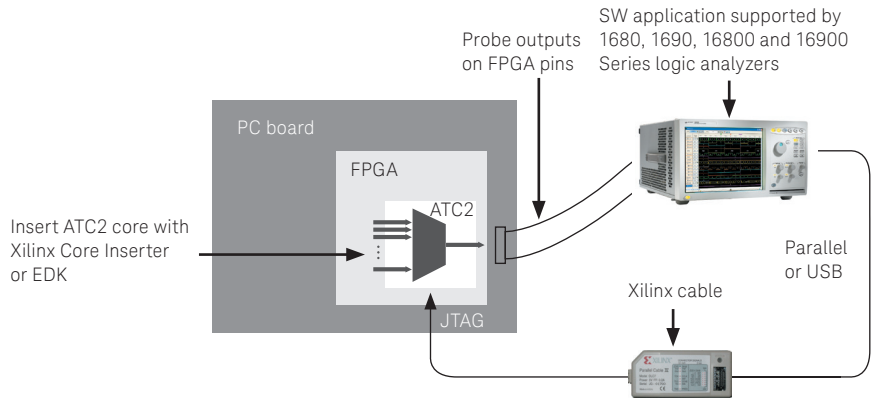


Figure 2. Create a timesaving FPGA measurement system. Insert an ATC2 (Keysight Trace Core) core into your FPGA design. With the application running on your logic analyzer, you control which group of internal signals to measure via JTAG.

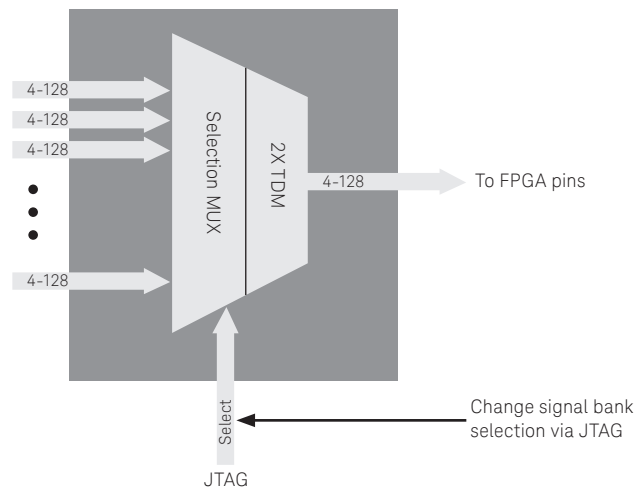
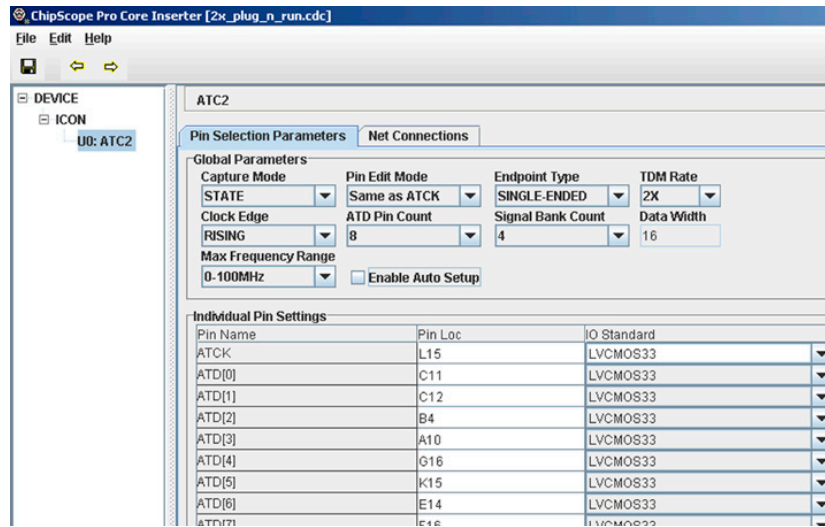


Figure 3. Access up to 128 internal signals for each debug pin. Select cores with 1, 2, 4, 8, 16, 32, or 64 signal banks. Signal banks all have identical width (4 to 128 signals wide) determined by the number of pins you devote for debug. Each pin provides sequential access to 1 signal on every input bank. Using an optional 2X time division compression in state mode, each pin can access 2 signals per bank.

A Quick Tour of the Application

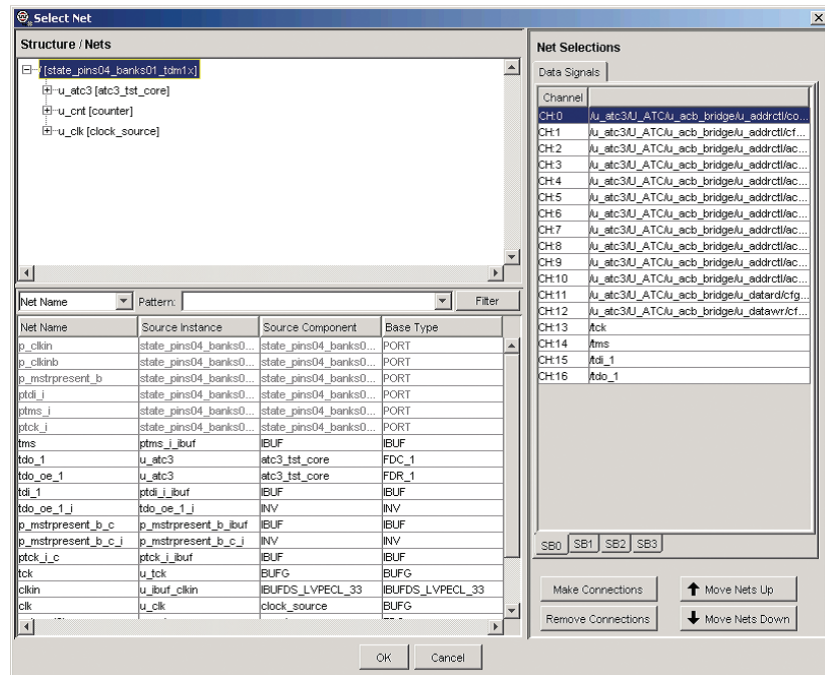
Design step 1: Create the ATC2 core

Use Xilinx Core Inserter or EDK to select your ATC2 parameters and to create a debug core that best matches your development needs. Parameters include number of pins, number of signal banks, the type of measurement (state or timing), and other ATC2 attributes.



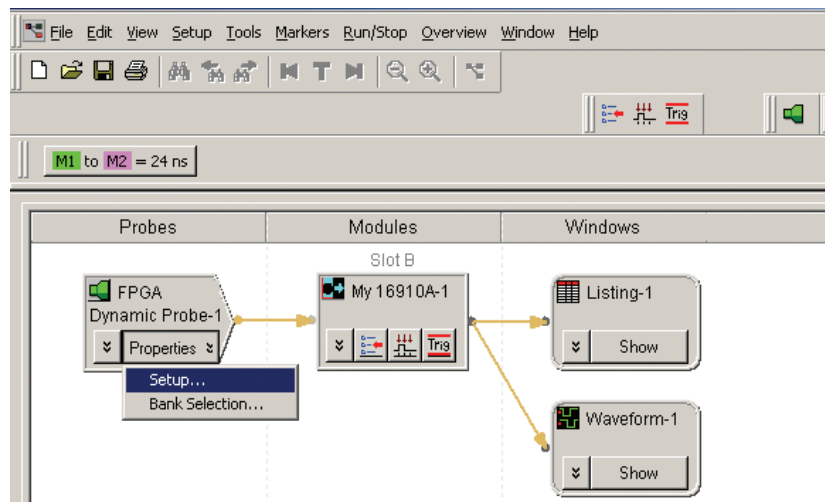
Design step 2: Select groups of signals to probe

Specify banks of internal signals that are potential candidates for logic analysis measurements (using Xilinx Core Inserter or EDK).



Activate FPGA Dynamic Probe

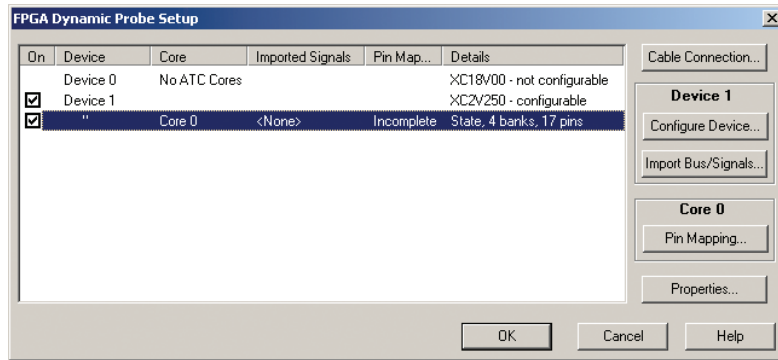
The FPGA dynamic probe icon allows you to control the ATC2 Core and setup the logic analyzer.



A Quick Tour of the Application (Continued)

Measurement setup step 1: Establish a connection between the analyzer and the ATC2 core

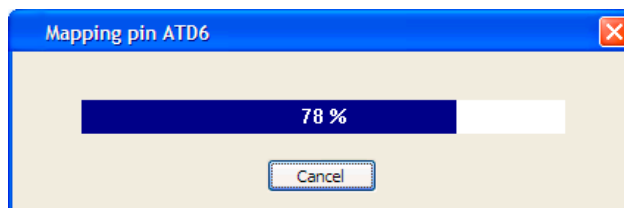
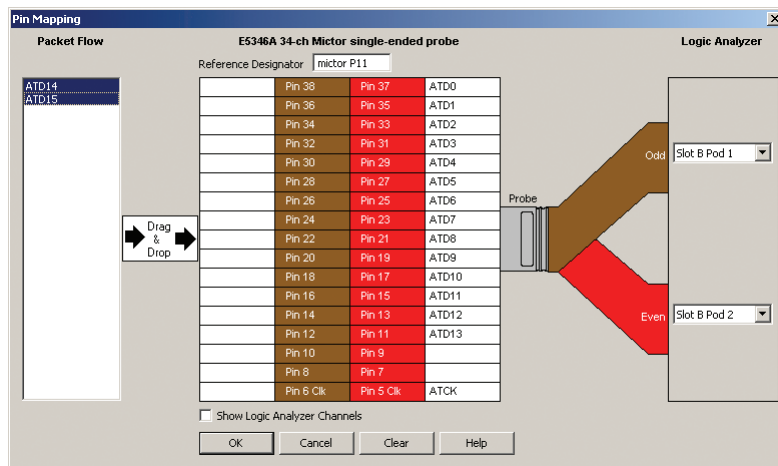
The FPGA dynamic probe application establishes a connection between the logic analyzer and a Xilinx cable. It also determines what devices are on the JTAG scan chain and lets you pick the device with which you wish to communicate. Core and device names are user definable.



Measurement setup step 2: Map FPGA pins

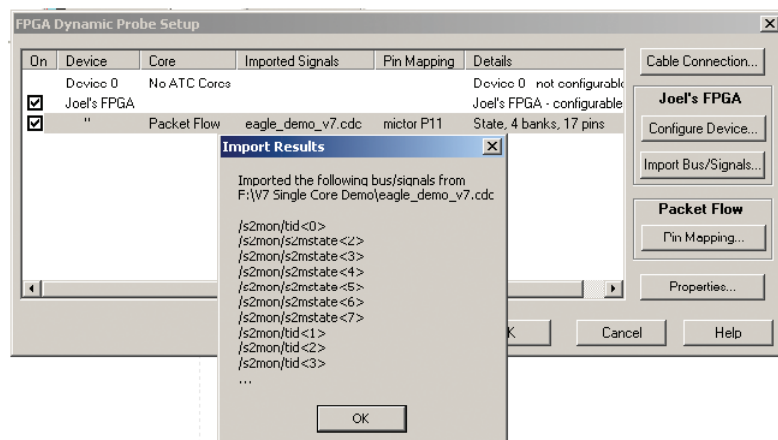
Quickly specify how the FPGA pins (the signal outputs of ATC2) are connected to your logic analyzer. Select your probe type and rapidly provide the information needed for the logic analyzer to automatically track names of signals routed through the ATC2 core.

For ATC2 cores with auto setup enabled, each pin of the ATC2 core, one at a time, produces a unique stimulus pattern. The instrument looks for this unique pattern on any of its acquisition channels. When the instrument finds the pattern, it associates that instrument channel with the ATC2 output pin producing it. It then repeats the process for each of the remaining output pins eliminating the need to manually enter probe layout information.



Measurement setup step 3: Import signal names

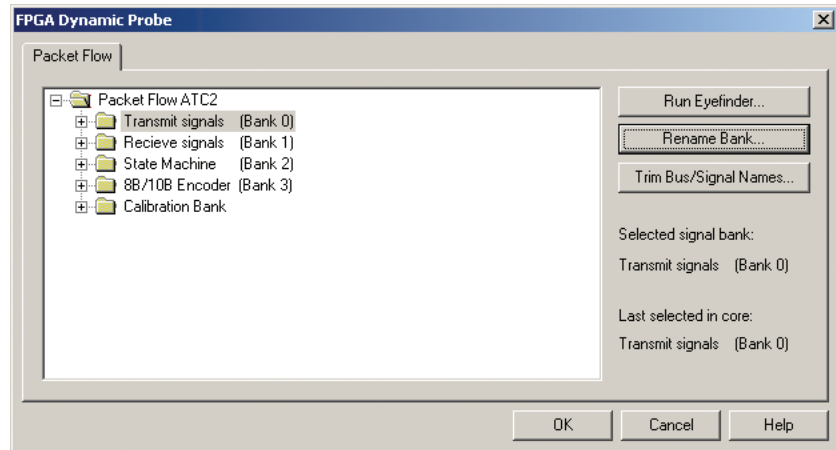
Tired of manually entering bus and signal names on your logic analyzer? The FPGA dynamic probe application reads a .cdc file produced by the Xilinx Core Inserter. The names of signals you measure will now automatically show on your logic analysis interface.



A Quick Tour of the Application (Continued)

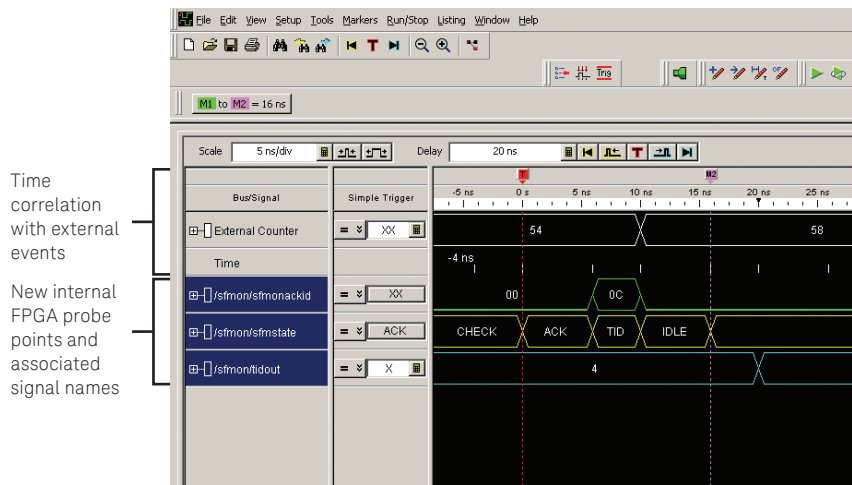
Setup complete: Make measurements

Quickly change which signal bank is routed to the logic analyzer. A single mouse click tells the ATC2 core to switch to the newly specified signal bank without any impact to the timing of your design. To make measurements throughout your FPGA, change signal banks as often as needed. User-definable signal bank names make it straight forward to select a part of your design to measure.



Correlate internal FPGA activity with external measurements

With each new selection of a signal bank, the application updates new signal names from your design to the logic analyzer. View internal FPGA activity and time correlate internal FPGA measurements with external events in the surrounding system.



Using the FPGA Dynamic probe, each pin provides access to up to 128 internal signals. The number of debug pins can range from 4 to 128 depending on your needs. When using synchronous cores, one additional pin is used for the clock.

Number of debug pins	Maximum internal signals
4	512
8	1024
16	2048
•	•
•	•
•	•
128	16384

Keysight B4655A Specifications and Characteristics

Supported logic analyzers		
Portable and PC-hosted logic analyzers	16800 Series, 1690 Series, 1680 Series	
Modular logic analysis systems	<ul style="list-style-type: none"> - 16900 Series with one or more state/timing modules: A single node-locked FPGA dynamic probe license will enable all modules within a 16900 Series system - U4154A logic analyzer module 	
Triggering capabilities	Determined by logic analyzer	
Supported Xilinx FPGA families	Virtex-5, Virtex-4, Virtex-II Pro series, Virtex-II series, Spartan-3 series	
Supported Xilinx cables (required)	Parallel 3 and 4, Platform Cable USB	
Supported probing mechanisms	Soft touch (34-channel and 17-channel), Mictor, Samtec, Flying lead	
FPGA dynamic probe software application		
Maximum number of devices supported on a JTAG scan chain	256	
Maximum number of ATC2 cores supported per FPGA device	15	
Keysight trace core characteristics		
Number of output signals	User definable: Clock line plus 4 to 128 signals in 1 signal increments	
Signal banks	User definable: 1, 2, 4, 8, 16, 32, or 64	
Modes	State (synchronous) or timing (asynchronous) mode	
Compression	Optional 2X compression in state mode via time division multiplexing. Logic analyzer decompresses the data stream to allow for full triggering and measurement capability.	
FPGA Resource consumption	<ul style="list-style-type: none"> - Approximately 1 slice required per input signal to ATC2 Core - Consumes no BUFs, DCM or Block RAM resources - See resource calculator at www.keysight.com/find/fpga 	
Compatible design tools		
ChipScope Pro Version	1680, 1690, 16800, 16900 Series SW Version	Primary new features
6.2i, 6.3i	2.5 or higher	Mouse-click bank select, graphical pin mapping, .cdc signal name import
6.2i, 6.3i	3.0 or higher	Support for Virtex-4 devices, improved JTAG drivers, single-session multi-core support, user-definable naming
7.1i	3.2 or higher	Plug & run (auto pin mapping), ATC2 "always on" option, ATC2 width + 64 banks, Platform Cable USB support, PRBS stimulus on test bank
8.2i	3.5 or higher	Support for Virtex-5 devices and 16800 Series logic analyzers
EDK (Embedded Development Kit)		
8.1i SP2	3.2 or higher	Support for ATC2 core using EDK flow
Synthesis	Core Inserter produces ATC2 cores post-synthesis (pre-place and route) making the cores synthesis independent. ATC2 cores produced by Core Generator are compatible with: <ul style="list-style-type: none"> - Exemplar Leonardo Spectrum - Synopsys Design Compiler - Synopsys Design Compiler II - Synopsys FPGA Express - Synplicity Synplify - Xilinx XST 	

Additional information available via the Internet: www.keysight.com/find/FPGA

Ordering Information

Ordering options for the Keysight B4655A FPGA dynamic probe

Option 011	<ul style="list-style-type: none"> - Entitlement certificate for perpetual node-locked license - CD with application software
Option 012	<ul style="list-style-type: none"> - Entitlement certificate for perpetual floating license - CD with application software

Related Keysight Literature

Publication title	Pub number
Frequently Asked Questions B4655A FPGA Dynamic Probe for Xilinx - Data Sheet	5989-1170EN
16900 Series Logic Analysis Systems - Brochure	5989-0420EN
Measurement Modules for the 16900 Series - Data Sheet	5989-0422EN
U4154A Logic Analyzer Module - Data Sheet	5990-7513EN
16800 Series Portable Logic Analyzers - Brochure	5989-5062EN
16800 Series Portable Logic Analyzers - Data Sheet	5989-5063EN
1680 and 1690 Series Logic Analyzers - Data Sheet	5988-2675EN
Planning Your Design for Debug: FPGA Dynamic Probe - Design Guide	5989-1593EN

For copies of this literature, contact your Keysight representative or visit www.keysight.com/find/logic

myKeysight

myKeysight

www.keysight.com/find/mykeysight

A personalized view into the information most relevant to you.



www.axiestandard.org

AdvancedTCA® Extensions for Instrumentation and Test (AXIe) is an open standard that extends the AdvancedTCA for general purpose and semiconductor test. Keysight is a founding member of the AXIe consortium. ATCA®, AdvancedTCA®, and the ATCA logo are registered US trademarks of the PCI Industrial Computer Manufacturers Group.



www.lxistandard.org

LAN eXtensions for Instruments puts the power of Ethernet and the Web inside your test systems. Keysight is a founding member of the LXI consortium.



www.pxisa.org

PCI eXtensions for Instrumentation (PXI) modular instrumentation delivers a rugged, PC-based high-performance measurement and automation system.



Three-Year Warranty

www.keysight.com/find/ThreeYearWarranty

Keysight's commitment to superior product quality and lower total cost of ownership. The only test and measurement company with three-year warranty standard on all instruments, worldwide.



Keysight Assurance Plans

www.keysight.com/find/AssurancePlans

Up to five years of protection and no budgetary surprises to ensure your instruments are operating to specification so you can rely on accurate measurements.



www.keysight.com/go/quality

Keysight Technologies, Inc.
DEKRA Certified ISO 9001:2008
Quality Management System

Keysight Channel Partners

www.keysight.com/find/channelpartners

Get the best of both worlds: Keysight's measurement expertise and product breadth, combined with channel partner convenience.

www.keysight.com/find/logic

For more information on Keysight Technologies' products, applications or services, please contact your local Keysight office. The complete list is available at: www.keysight.com/find/contactus

Americas

Canada	(877) 894 4414
Brazil	55 11 3351 7010
Mexico	001 800 254 2440
United States	(800) 829 4444

Asia Pacific

Australia	1 800 629 485
China	800 810 0189
Hong Kong	800 938 693
India	1 800 112 929
Japan	0120 (421) 345
Korea	080 769 0800
Malaysia	1 800 888 848
Singapore	1 800 375 8100
Taiwan	0800 047 866
Other AP Countries	(65) 6375 8100

Europe & Middle East

Austria	0800 001122
Belgium	0800 58580
Finland	0800 523252
France	0805 980333
Germany	0800 6270999
Ireland	1800 832700
Israel	1 809 343051
Italy	800 599100
Luxembourg	+32 800 58580
Netherlands	0800 0233200
Russia	8800 5009286
Spain	800 000154
Sweden	0200 882255
Switzerland	0800 805353
	Opt. 1 (DE)
	Opt. 2 (FR)
	Opt. 3 (IT)
United Kingdom	0800 0260637

For other unlisted countries:
www.keysight.com/find/contactus
(BP-09-23-14)

