

Agilent N6030A Arbitrary Waveform Generator 15-Bit, 1.25 GS/s

Technical Overview



The Agilent Technologies N6030A arbitrary waveform generator (AWG) is capable of creating high-resolution waveforms for radar, satellite, and frequency agile communication systems. Each channel of the N6030A operates at 1.25 GS/s and features 15 bits of vertical resolution giving designers the most realistic, wideband waveforms available from a commercial AWG.

- 1.25 GS/s and 15 bits of vertical resolution per channel provides exceptionally realistic wideband waveforms
- Dual output channels drive both single-ended and balanced designs without the need for baluns or hybrids
- Extended waveform memory and advanced sequencing engine offers long scenario simulations
- Multiple module synchronization provides multi-emitter simulations
- Multiple programmatic interfaces enable easy integration into existing test environments



Agilent Technologies

Generate wide bandwidth AND wide dynamic range signals, simultaneously

The N6030A is a 4 slot 3U CompactPCI module that offers dual differential output channels to drive both single-ended and balanced designs. The AWG also supports advanced sequencing and triggering modes to create event-based signal simulations. Multiple N6030A modules can be synchronized for the generation of phase-coherent, multi-emitter scenarios. Waveform development tasks are simplified using the AWG's numerous programmatic interfaces including complete instrument control from the MATLAB® command line. When the N6030A is combined with a wideband I/Q upconverter, modulation bandwidths of 1 GHz can be realized at microwave frequencies for authentic signal simulations for IF and RF subsystem test.¹

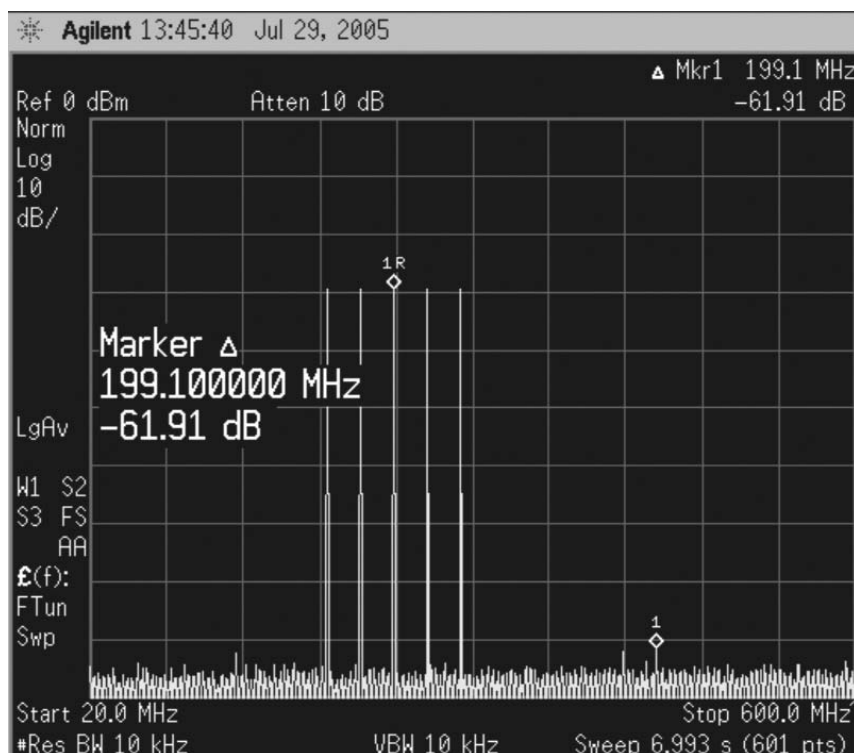


Figure 1. Generate wideband waveforms with unprecedented signal fidelity.

Unprecedented performance

The N6030A gives designers access to the most advanced Digital-to-Analog (DAC) technology available in a commercial AWG. Each module incorporates two high-speed DACs to create 500 MHz of signal bandwidth and ≤ -65 dBc spurious free dynamic range (SFDR) across each channel. Users have the choice of driving their designs differentially from the DAC outputs or single-ended through multiple signal-conditioning paths. Although some AWGs require users

to make a trade-off between the number of output channels and differential outputs, the N6030A provides both—allowing you to drive your designs and eliminating the need for baluns or hybrids in the test path. In addition, each channel can output waveforms as an IF or as a baseband signal for I/Q upconversion.

¹ Agilent E8267D PSG signal generator with Option 016, wideband I/O inputs or Agilent N8212A performance vector upconverter with Option 016; either option could be used.

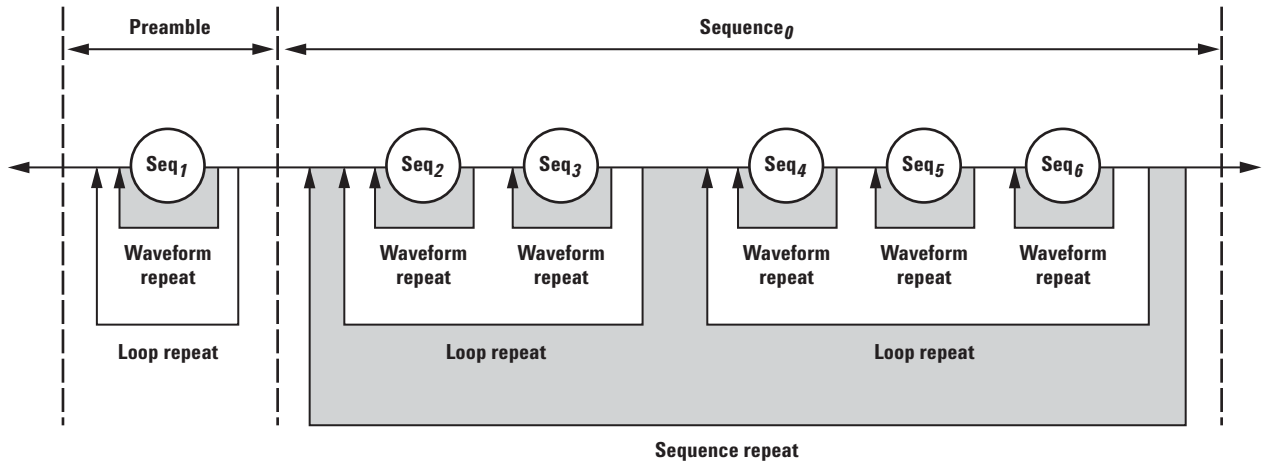


Figure 2. Create sophisticated signal scenarios by looping and nesting waveforms.

Create long scenario simulations

Multiply the effective size of on-board memory through the use of the N6030A's advanced sequencing engine. Uniquely define how waveform segments are played through looping and nesting of stored waveforms. This capability also gives users the ability to create new signals from existing waveforms by playing only subsegments of waveform memory. For users developing a large number of waveform scenarios the CompactPCI backplane substantially reduces waveform download times compared to traditional LAN and GPIB. The N6030A's complete waveform and sequencer memories can be typically reloaded in less than 1 second.

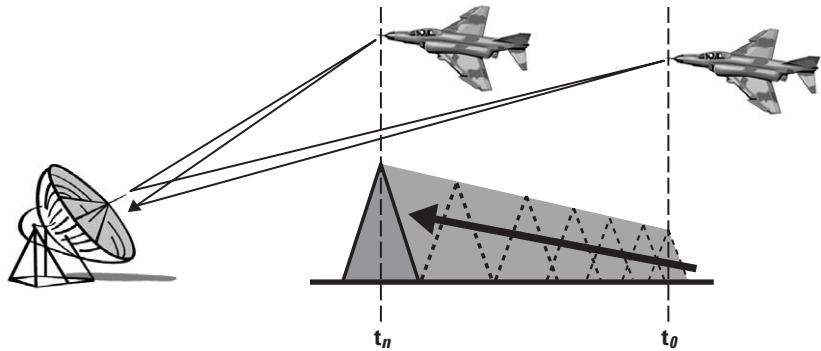


Figure 3. Closing targets can be simulated by ranging parameters on each pulse.

System scalability

Create phase-coherent, multi-emitter simulations using the N6030A's precision SYNC clock. A single N6030A can drive a total of eight AWG modules to synchronize their outputs on a sample-by-sample basis. Any number of modules can be synchronized with simple driver hardware. The AWG also includes multiple front-panel triggers and markers for complete system synchronization.

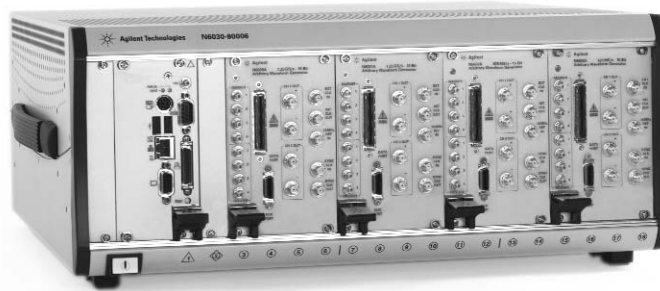


Figure 4. Four N6030A modules fit conveniently inside an 18 slot CompactPCI chassis.

Ease-of-use

The N6030A's graphical user interface guides developers through module setup and waveform file transfers. Users can quickly configure the instrument's signal conditioning paths, sample and reference clock sources, and simple sequencing functions. More sophisticated sequencing functions are available through the instrument's numerous programmatic interfaces. The N6030A supports interfaces for MATLAB®, LabView, IVC, and VEE frameworks.

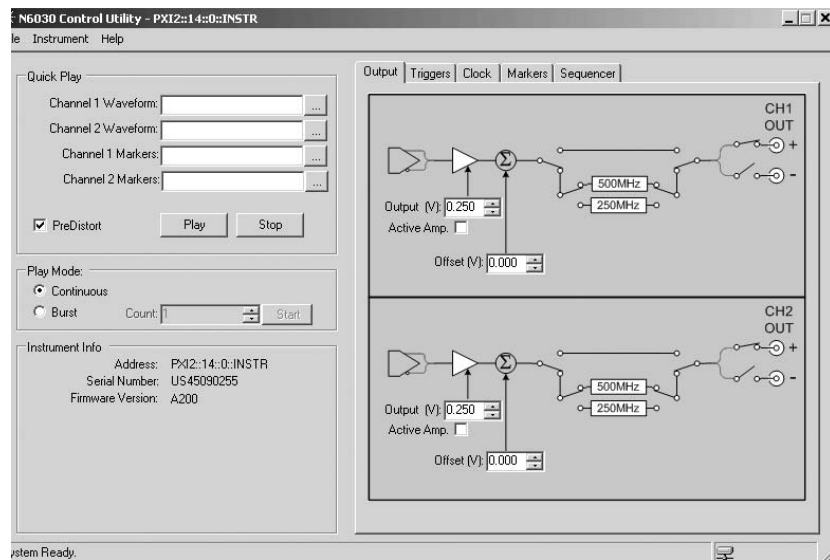


Figure 5. Directly import and play waveforms from the Quick Play menu.

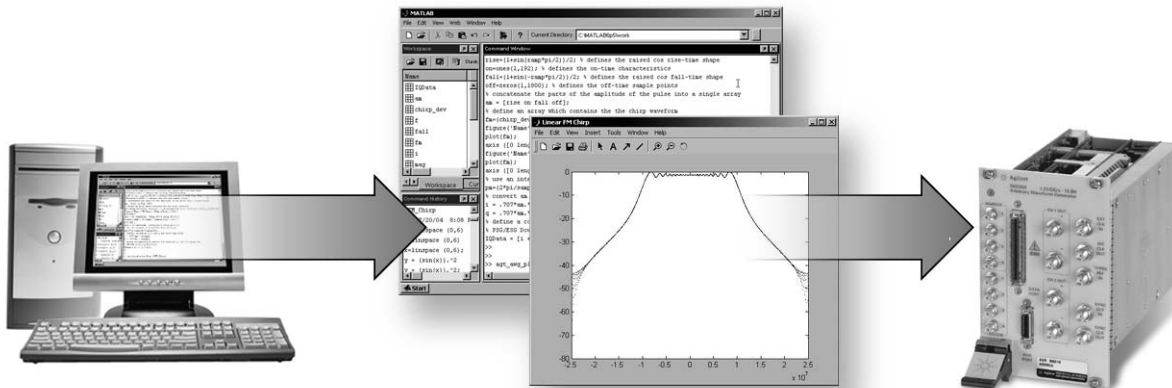


Figure 6. Play waveforms files directly from the MATLAB command line.

New! Enhanced capabilities for the N6030 Series!

Dynamic Sequencing (Option 300)

The dynamic sequencing software enables radar and military communications engineers to build custom signal scenarios on the fly. Engineers can dynamically access up to 16 k of previously stored sequences through a 16-bit interface and replay these complex waveforms to respond to changing threat environments, or to create signals where the next waveform to be played is not known in advance. Option 300 requires a U.S. export license.

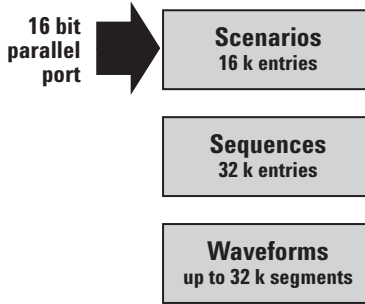


Figure 7. Create signals where next waveform to be played is not known in advance.

Direct Digital Synthesis (Option 330)

The direct digital synthesis (DDS) software enables radar and emerging communications engineers to create basic waveforms in the AWG's memory and then modify their behavior with profiles for amplitude modulation, phase modulation, and frequency modulation. This enables engineers to simulate testing without the time and expense of field trials, such as in-flight and in-orbit testing. This option can also be used to simulate fading profiles in receiver testing for satellite and 4 G signals, such as multiple input and multiple output formats (MIMO). Option 330 requires a U.S. export license.

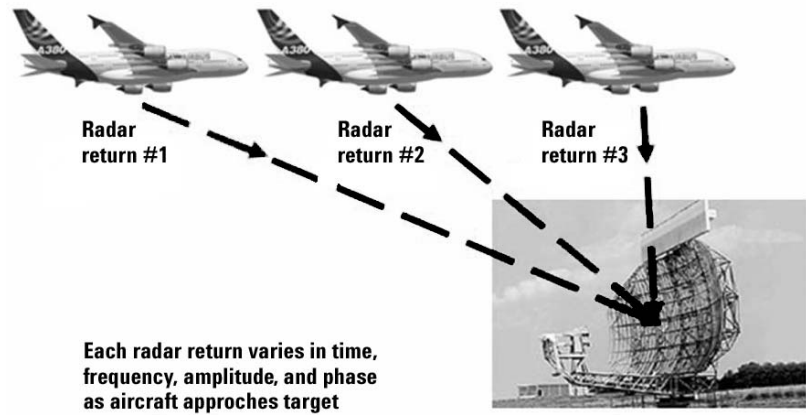


Figure 8. Define signals by carrier frequency and modulation—instant by instant.

Key characteristics

Channels

Two independent channels available as baseband or IF outputs:

- CH1: Single-ended and differential
- CH2: Single-ended and differential

Modulation bandwidth

500 MHz per channel
(1 GHz I/Q bandwidth)

Resolution

15 bits (1/32,768 levels)

Output spectral purity— (CH1 and CH2)

- **Harmonic distortion:**
≤ -65 dBc for each channel DC to 500 MHz
- **Non-harmonic spurious:**
≤ -75 dBc for each channel 1 kHz to 500 MHz
- **Noise floor:**
≤ -150 dBc/Hz across the channel bandwidth

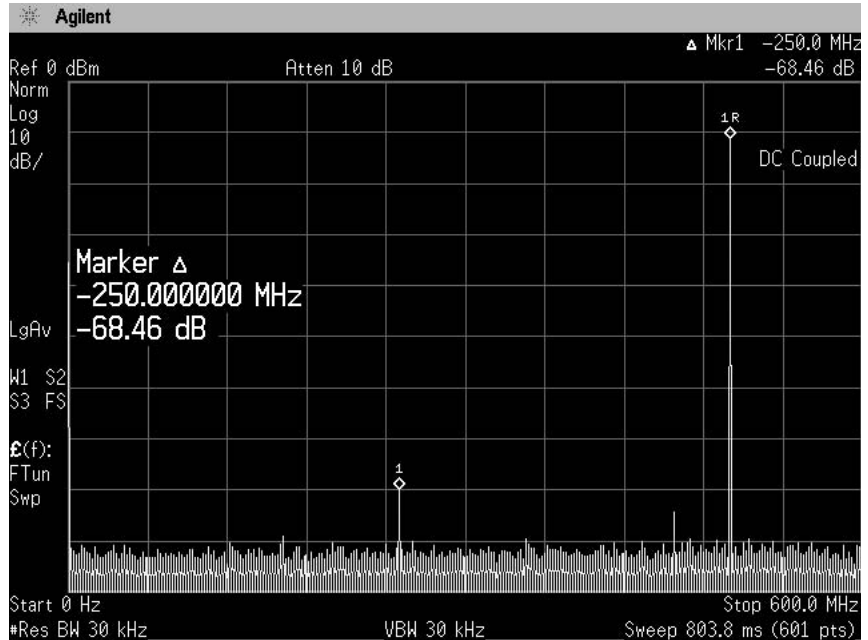


Figure 9. Excellent harmonic and spurious performance are available across the full bandwidth of each channel.

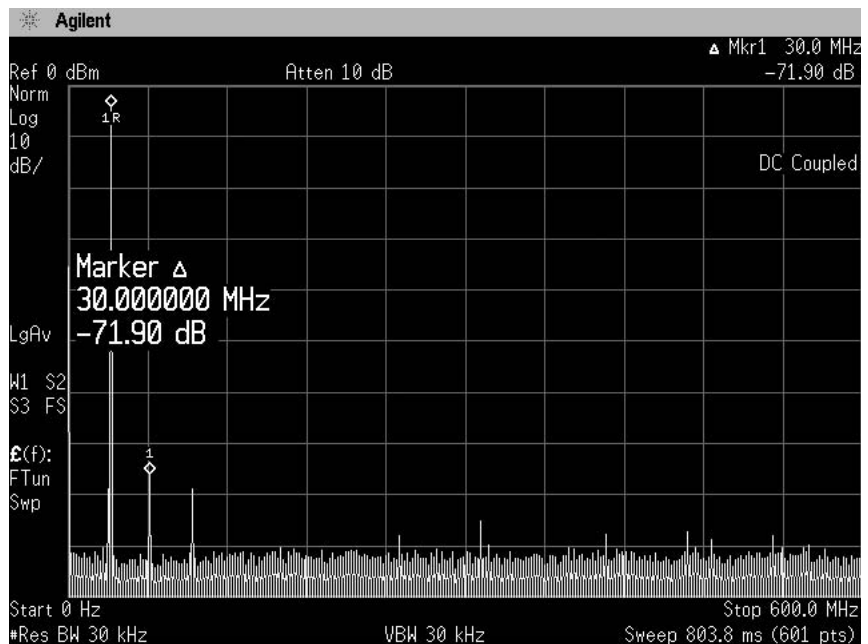


Figure 10. Spurious performance outstanding at low signal frequencies.

Key characteristics continued

Sample clock

Internal

Fixed 1.25 GS/s

Internal clock output

+3 dBm nominal

External clock input

Tunable 100 MS/s to 1.25 GS/s

External clock input drive level

+5 to -15 dBm typical

Phase noise characteristics:

| | |
|----------|-------------|
| 1 kHz: | -95 dBc/Hz |
| 10 kHz: | -115 dBc/Hz |
| 100 kHz: | -138 dBc/Hz |
| 1 MHz: | -150 dBc/Hz |

Noise Floor

-150 dBc/Hz

Accuracy

Same as 10 MHz timebase input

Frequency reference

Input drive level

+2 to +12 dBm into 50 ohms
(+2 dBm nominal)

Waveform length

8 MS per channel
(16 MS with Option 016)

Minimum waveform length

128 samples

Waveform granularity

8 samples

Segments

1 to 32 k unique segments can be defined consisting of waveform start and stop address, repetitions, and marker enable flags.

Segment loops

A total of 1 million (2^{20}) loops can be defined for each segment. Loops can be configured to advance in one of three modes:

- **Single**
The segment loop plays once and waits at the end of the loop for a trigger.
- **Continuous**
Segment loop is repeated continuously until a trigger is received.
- **Auto**
Automatically advances to the next segment after completing the specified number of loop repetitions.
- **Repeat**
The waveform loop repeats until the number of waveform loop repetitions is met.

Sequences

Up to 32 k total unique waveform sequences can be defined. A sequence is a contiguous series of waveform segments.

Advanced sequencing

Enables users to build and playback scenarios, which are comprised of one or more sequences.

Scenarios

1 to 16 k pointers can be assigned to play pre-defined sequences. Sequence play begins with the first sequence entry and continues uninterrupted until the last entry is played. The table repeats until stopped.

Key characteristics continued

Sequence jump modes

Sequence jumps determine how a sequence responds to a jump trigger. There are no discontinuities in a sequence jump other than those imposed by the waveform data. Three modes are available to control sequence jumps:

- **Jump immediate**
Jumps immediately to the next specified sequence address with a fixed latency.
- **End of segment**
The current segment (including waveform repeats) is completed before jumping to a new sequence.
- **End of sequence**
The current sequence is completed before jumping to a new sequence. Jump latency is the longer of either the jump immediate latency or the length of the remaining sequence.

• Dynamic Sequencing (Option 300)

Input: 20-pin mini-D connector

Input levels: All pins configured as 2.5 volt LVCMOS inputs. A logic low must fall within the -0.2 to +0.5 volt window. A logic high must be within the window of +2.0 to +2.8 volts.

Number of address bits:
13 bits per channel

Total number of addressable scenarios: 16 k

Data rate for dynamic data:
100 ns

Data latency: same as front panel trigger inputs

Software pointers may also be used to point to pre-defined scenarios over the PCI backplane though latencies are not deterministic.

• Direct Digital Synthesis (Option 330)

Output frequency resolution:
1 Hz

Frequency modulation:
Deviation from 0 to 125 MHz
(250 MHz peak-peak)

Phase modulation:
Deviation from -180 to +180
degrees in 0.022 degree steps

Amplitude modulation:
Modulation depth from 0 to 100%
with 15 bit resolution

Single channel bandwidth:
400 MHz (800 MHz I/Q)

Key characteristics continued

External triggers

Number of inputs

8 each (4 SMB female front-panel connectors plus four software triggers over the PCI backplane from host processor)

Trigger polarity

Negative/positive

Trigger impedance

2 k ohms

Maximum input level

±4.5 volts

Input sensitivity

250 mV

Trigger threshold

-4.3 volts to +4.3 volts

Trigger timing resolution

Clock/8 (6.4 ns at full rate)

Trigger latency

34 * Clk/8 (217.6 ns at full rate)

Trigger uncertainty

< 50 ps

Minimum trigger width

12.8 ns at full clock rate

Trigger delay

Programmable from 1 to 256 sync clock cycles with 1 sync clock cycle resolution¹

External markers

Markers can be defined for each waveform segment.

Number of outputs

4 each SMB female

Marker polarity

Negative, positive

Output impedance

50 ohms

Marker low level

100 mV nominal into high impedance load

Marker high level

3.2 Volts nominal into high impedance load

Marker timing resolution

Clock/8 (6.4 ns at full rate)

Marker latency

Marker precedes analog output and is adjustable in 2 sample clock period steps.

Marker latency repeatability

< 100 ps

Marker width

Programmable from 1 to 256 sync clock cycles

Marker delay

Programmable from -8 to 502 sample clock cycles, with 2 sample clock cycle resolution

Module synchronization

Supports system scaling for any number of N6030A modules. A single module can support fan-out of 8 N6030A modules for precise triggering and repeatability. Driver boards may be used to scale any number of modules.

Sync clock output level

800 mV p-p (50 ohms, AC coupled)

Sync clock input sensitivity

100 mV p-p minimum into 50 ohms AC coupled

Analog output

Output connector

SMA female

Output impedance

50 Ohms

Analog output levels

The following output levels are specified into 50 ohms

| | Single-ended | Differential |
|------------------------|------------------------------------------|---------------------------------------|
| Passive mode | 0.5 V _{p-p} | N/A |
| Active mode | 1 V _{p-p} with ±0.2 V offset | N/A |
| Direct DAC mode | N/A | 1 V _{p-p} (0 volt offset) |

Uncorrected passband flatness

±1 dB DC - 200 MHz;
±2.5 dB DC - 500 MHz
(with 1.25 GHz clock)

Uncorrected passband group delay

±500 ps DC - 200 MHz;
±1 ns DC - 500 MHz
(with 1.25 GHz clock)

Reconstruction filters

500 MHz and 250 MHz realized as 7-pole Cauer Chebychev filters plus thru-line output

Pulse response

Rise time (10 to 90%): < 1 ns
Fall time (10 to 90%): < 1 ns
Amplitude: 0.5 V_{p-p}

¹ A sync clock cycle is clock/8.

General characteristics

Power

| Supply | Typical operation (watts) |
|--------------------|---------------------------|
| +3.3 VDC | 11.2 |
| +5 VDC | 22 |
| +12 VDC | 5 |
| -12 VDC | 5 |
| Total Power | 43.2 |

Environmental

Operating temperature

0 to +50 degrees C
(meets IEC-60068-2-1
and IEC-60068-2-2)

Storage temperature

-20 to +70 degrees C
(meets IEC-60068-2-1
and IEC-60068-2-2)

Relative humidity

10 to 90% at 40 degrees C,
non-condensing

Altitude

0 to 2000 m above
mean sea level

Shock and vibration

- Transportation shock
(50 G peak trapezoidal)
[meets IEC-60068-2-27]
- End use handling shock
(75 G peak, 1/2 Sine (2-3 ms))
[meets IEC-60068-2-27]
- Operating random
(5-500 Hz, .21 g RMS)
[meets IEC-60068-2-64]
- Survival swept sine
(5-500 Hz, .5 g)
[meets IEC-60068-2-6]
- Survival random
(5-500 Hz, 2.09 g RMS)
[meets IEC-60068-2-6]

Safety

Designed for compliance to
EN 61010-1 (2001)

EMC

Meets the conduction and radiated
interference and immunity require-
ments of EN 61326-1.

Weight

1.14 kg (2.5 lb)

Security

All user data stored in volatile memory

Dimensions

3U, 4 slot CompactPCI module

8.1 x 13 x 21.6 cm
(3.2 x 5.1 x 8.5 inches)

ISO compliance

This modular instrument is
manufactured in an ISO-9001
registered facility in concurrence
with Agilent Technologies, Inc.
commitment to quality.

Ordering Information and Options



Figure 11. Agilent N6030A AWG with controller in CompactPCI chassis

N6030A Arbitrary waveform generator with 8 MS memory per channel

Options

N6030A-016 Waveform memory expansion to 16 MS memory per channel

N6030A-300 Enabling software for 16-bit dynamic sequencing (requires U.S. export license)

N6030A-330 Direct digital synthesis software (requires U.S. export license)

N6030A-500 PXI 18-slot chassis

N6030A-501 PXI embedded controller, P4

N6030A-502 PXI MXI-4 kit (includes PC and chassis PCI cards)

N6030A-503 Shielded PXI chassis filler panel kit

N6030A-504 17-inch flat panel monitor

N6030A-505 PS2 keyboard and mouse

N6030A-506 Rack mount kit for PXI chassis

Web resources

Visit our web sites for additional product information and literature.

N6030A arbitrary waveform generator
www.agilent.com/find/awg

Signal simulation systems
www.agilent.com/find/signalsimulation

Aerospace and defense test and measurement products and services
www.agilent.com/find/ad

Test and measurement accessories
www.agilent.com/find/accessories

N8241A/N8242A arbitrary waveform generator synthetic instrument modules
www.agilent.com/find/synthetic

NOTE: For the N6030A to work properly, at least one PXI chassis and one PXI controller type must be available. These should be ordered from the Options 500, 501, or 502 choices above or they must be customer-supplied.

MATLAB® is a U.S. registered trademark of Math Works, Inc.



Agilent Email Updates

www.agilent.com/find/emailupdates

Get the latest information on the products and applications you select.



Agilent Direct

www.agilent.com/find/agilentdirect

Quickly choose and use your test equipment solutions with confidence.



www.agilent.com/find/open

Agilent Open simplifies the process of connecting and programming test systems to help engineers design, validate and manufacture electronic products. Agilent offers open connectivity for a broad range of system-ready instruments, open industry software, PC-standard I/O and global support, which are combined to more easily integrate test system development.

Remove all doubt

Our repair and calibration services will get your equipment back to you, performing like new, when promised. You will get full value out of your Agilent equipment throughout its lifetime. Your equipment will be serviced by Agilent-trained technicians using the latest factory calibration procedures, automated repair diagnostics and genuine parts. You will always have the utmost confidence in your measurements.

Agilent offers a wide range of additional expert test and measurement services for your equipment, including initial start-up assistance onsite education and training, as well as design, system integration, and project management.

For more information on repair and calibration services, go to:

www.agilent.com/find/removealldoubt

www.agilent.com

Online assistance:

www.agilent.com/find/awg

For more information on Agilent Technologies' products, applications or services, please contact your local Agilent office. The complete list is available at:

www.agilent.com/find/contactus

Phone or Fax

North America

| | |
|---------------|----------------|
| Canada | (877) 894-4414 |
| Latin America | 305 269 7500 |
| United States | (800) 829-4444 |

Asia Pacific

| | |
|-----------|----------------|
| Australia | 1 800 629 485 |
| China | 800 810 0189 |
| Hong Kong | 800 938 693 |
| India | 1 800 112 929 |
| Japan | 81 426 56 7832 |
| Korea | 080 769 0800 |
| Malaysia | 1 800 888 848 |
| Singapore | 1 800 375 8100 |
| Taiwan | 0800 047 866 |
| Thailand | 1 800 226 008 |

Europe

| | |
|----------------------|---------------------------------|
| Austria | 0820 87 44 11 |
| Belgium | 32 (0) 2 404 93 40 |
| Denmark | 45 70 13 15 15 |
| Finland | 358 (0) 10 855 2100 |
| France | 0825 010 700 |
| Germany | 01805 24 6333* *0.14 /minute |
| Ireland | 1890 924 204 |
| Italy | 39 02 92 60 8484 |
| Netherlands | 31 (0) 20 547 2111 |
| Spain | 34 (91) 631 3300 |
| Sweden | 0200-88 22 55 |
| Switzerland (French) | 44 (21) 8113811(Opt 2) |
| Switzerland (German) | 0800 80 53 53 (Opt 1) |
| United Kingdom | 44 (0) 7004 666666 |

Other European Countries:

www.agilent.com/find/contactus

Revised: March 24, 2007

Product specifications and descriptions in this document subject to change without notice.

© Agilent Technologies, Inc. 2006, 2007
Printed in USA, April 9, 2007
5989-1457EN



Agilent Technologies