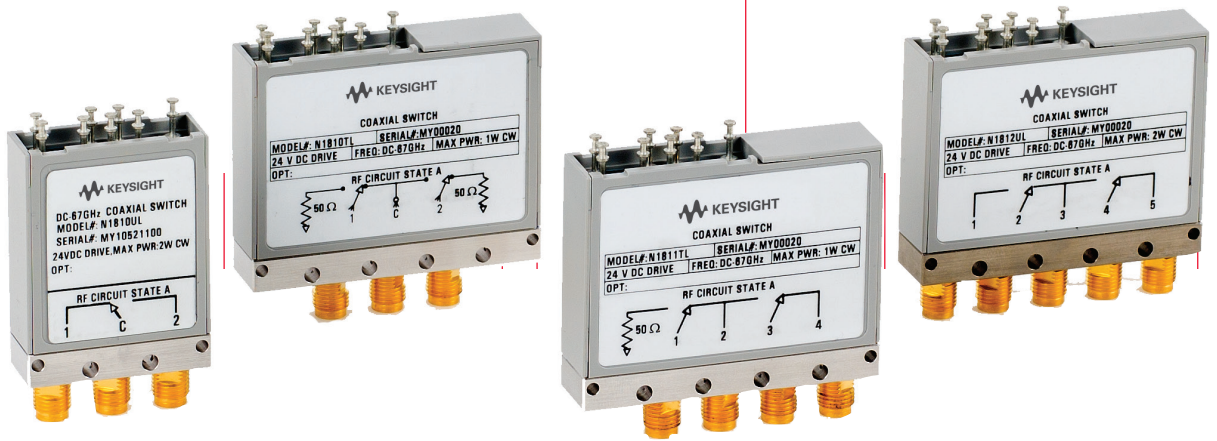


# Keysight Technologies

## N1810/1/2 Coaxial Switches

High Performance Electromechanical Switches for Microwave and RF Manufacturing Test Systems

### Technical Overview



# Introduction

## Key Features

- Insertion loss repeatability: < 0.03 dB up to 40 GHz and <0.08 at 67 GHz up to 5 million cycles
- High isolation: > 120 dB at 4 GHz and > 70 dB at 67 GHz
- Low SWR: < 1.10 at 4 GHz and < 1.90 at 67 GHz
- Low-insertion loss: < 0.27 dB at 4 GHz and < 1.12 at 67 GHz
- Long life: 5 million cycles, 10 million cycles typical

## Key Applications

- Radar and satellite testing
- Wireless W-HDMI device testing
- Microwave backhaul applications
  - DC to 4 GHz
  - DC to 20 GHz
  - DC to 26.5 GHz
  - DC to 40 GHz
  - DC to 50 GHz
  - DC to 67 GHz

In today's fast moving technical industries, test engineers need components they can count on. Keysight Technologies, Inc. offers a line of latching coaxial switches that combine legendary reliability with the widest range of performance options available today.

### Reduce downtime

Keysight Technologies is the world leader in innovating and developing microwave accessories for communications and aerospace applications. Our innovative design and strict adherence to quality process control ensure that each switch is guaranteed to perform within warranted specifications for its entire lifetime. With fewer breakdowns and less need to recalibrate, your test system moves quicker with less downtime, creating more throughput and revenue.

### Raise your standards

All Keysight switches offer excellent repeatability and long life – up to five times the lifecycles of the competition. Add to this aggressive specs for isolation, SWR, and insertion loss, and you have a switch that impresses even the most demanding engineer with its precision and durability.

### Increase flexibility

For test systems that require extra functionality or increased performance, the N181x family of switches has a solution that fits your need. The options include:

- Reduced SWR
- Increased isolation
- Standard or TTL drive
- 5, 15, 24 volt drive
- Position indicators

### Increase productivity

When you buy your switches from Keysight, you notice a difference. Your test platforms run smoother, longer and faster, while yielding more viable and valuable measurements.

## Description

### N1810UL

#### Unterminated latching

The Keysight N1810UL is a single-pole double-throw switch available in the frequency range from DC to 67 GHz. In precision measurements and monitoring applications where insertion loss repeatability is crucial, these switches operate in excess of 5 million cycles with better than 0.03 dB of insertion loss repeatability at 25 °C.

### N1810TL

#### Terminated latching

The Keysight N1810TL is a single-pole double-throw switch available in the frequency range from DC to 67 GHz. The unused port is terminated 50 Ω, making it ideal for applications where port matching is required.

### N1811TL

#### Terminated latching

The N1811TL is a terminated bypass switch available in the frequency range from DC to 67 GHz. The switch's internal load can terminate the device under test when in the bypass mode (up to 1 watt). Because of its compact design, it is ideal for drop-in, drop-out applications.

### N1812UL

#### Unterminated latching

The N1812UL is a versatile, unterminated 5-port switch available in the frequency range from DC to 67 GHz. In transfer switch applications, the fifth port can be terminated externally with a high-power termination. It can also be utilized for signal path reversal or as a calibration port.

## Technology

Keysight switches are designed with a rectangular coaxial structure similar to edge-line. This transmission line structure provides for movement of the edge-line center conductor between two fixed, continuous ground planes. The main advantage of this innovation is that the moving contacts can be easily activated, yet maintain high-isolation and low-insertion loss.

The RF contact configuration is designed for controlled wiping action. Since the outer conductor is not part of the switching function, repeatability and life are improved. The switching action occurs typically within 15 milliseconds, after which permanent magnets latch the contacts to retain the new switch position.

## Operation

All switches are “break before make,” the switched ports are not connected to each other. This prevents damage to sensitive circuits and enhances test simplicity.

### Driving

There are two positions for the N181x family of switches. Standard switching is accomplished by applying the supply voltage to pin 5 (+V) and grounding either pin 4 (A) or pin 3 (B) to actuate the mechanism to the desired state. See page 5, pin-out diagram.

Warning minimum switch spacing is 6.0 mm (0.25 inch).

The N181x comes with current interrupt, the drive current is automatically disconnected after the switch is fully latched (15 ms).

*Note: Prior to current interrupts becoming standard on the N181x, Option 403 current interrupt was available for ordering.*

**Option 401** drives the switch with TTL/5V CMOS compatible logic, which controls the DC power supply to drive the switch.

**Option 402** provides electronic indication of switch state. The circuitry consists of two independent commons, which can be connected to outputs corresponding to either position A or B. Because the commons are electrically isolated from each other as well as the drive circuit, this option allows two position signals to be obtained.

*Note: For option 402 (position indicator): To achieve maximum system stability, it is recommended to do a pre-cycling of minimum 100 cycles if the switch has been in storage or idling for an extended period of time.*

## Specifications

Specifications describe the instrument's warranted performance. Supplemental and typical characteristics are intended to provide information useful in applying the instrument by giving typical, but not warranted performance parameters.

### General

Maximum power rating	
Into internal termination	1 W CW, 7 VDC, 50 W pk, 10 μs max pulse duration, not to exceed 1 W average
Into thru path	
Hot switching	2 W CW, 10 VDC, 100 W pk, 10 μs max pulse duration, not to exceed 2 W average
Coil voltage	5, 15, 24 VDC
Connector	Option 004/020/026 SMA (f)
	Option 040 2.92 mm (f)
	Option 050 2.40 mm (f)
	Option 067 1.85 mm (f)

### Standard performance specifications – N1810/1/2 Series (Frequency Options 004/020/026)

$$\text{Isolation (dB)} = 90 - \left( \frac{30}{26.5} \right) F, \text{ where } F \text{ is specified in GHz}$$

DC	4 GHz	12.4 GHz	20 GHz	26.5 GHz
90	85	76	67	60

$$\text{Insertion loss (dB)} = 0.35 + \left( \frac{0.45}{26.5} \right) F, \text{ where } F \text{ is specified in GHz}$$

DC	4 GHz	12.4 GHz	20 GHz	26.5 GHz
0.35	0.42	0.56	0.69	0.80
SWR	DC-4 GHz	4-12.4 GHz	12.4-20 GHz	20-26.5 GHz
	1.15	1.25	1.30	1.60

## Specifications (continued)

### Standard performance specifications – N1810/1/2 Series (Frequency Options: 040/050/067)

Isolation (dB) =  $100 - \left(\frac{30}{26.5}\right) F$ , where F is specified in GHz (Formula Does not apply when F > 26.5 GHz)

	DC	4 GHz	12.4 GHz	20 GHz	26.5 GHz	40 GHz	50 GHz	67 GHz
	100	95	85	77	70	70	70	70

Insertion loss (dB)

Frequency Option 040:  $0.35 + \left(\frac{0.45}{26.5}\right) F$ , where F is specified in GHz (DC to 40 GHz)

Frequency Option 050:  $0.2 + \left(\frac{0.80}{26.5}\right) F$ , where F is specified in GHz (DC to 50 GHz)

Frequency Option 067:  $0.35 + \left(\frac{0.45}{26.5}\right) F$ , where F is specified in GHz (DC to 26.5 GHz)

$0.59 + \left(\frac{0.53}{67}\right) F$ , where F is specified in GHz (26.5 to 67 GHz)

	DC	4 GHz	12.4 GHz	20 GHz	26.5 GHz	40 GHz	50 GHz	67 GHz
Option 040	0.35	0.41	0.56	0.68	0.80	1.02	–	–
Option 050	0.20	0.26	0.40	0.52	0.62	0.84	1.00	–
Option 067	0.35	0.41	0.56	0.68	0.80	0.91	0.99	1.12
SWR	DC	4 GHz	12.4 GHz	20 GHz	26.5 GHz	40 GHz	50 GHz	67 GHz
Option 040	1.15	1.15	1.25	1.40	1.60	1.80	–	–
Option 050	1.15	1.15	1.25	1.50	1.60	1.80	1.80	–
Option 067	1.15	1.15	1.25	1.30	1.70	1.90	1.90	1.90

### Optional high-performance specifications – N1810/1/2 Series (not applicable for Frequency Options 040/050/067)

Isolation (dB) =  $125 - \left(\frac{35}{26.5}\right) F$ , where F is specified in GHz

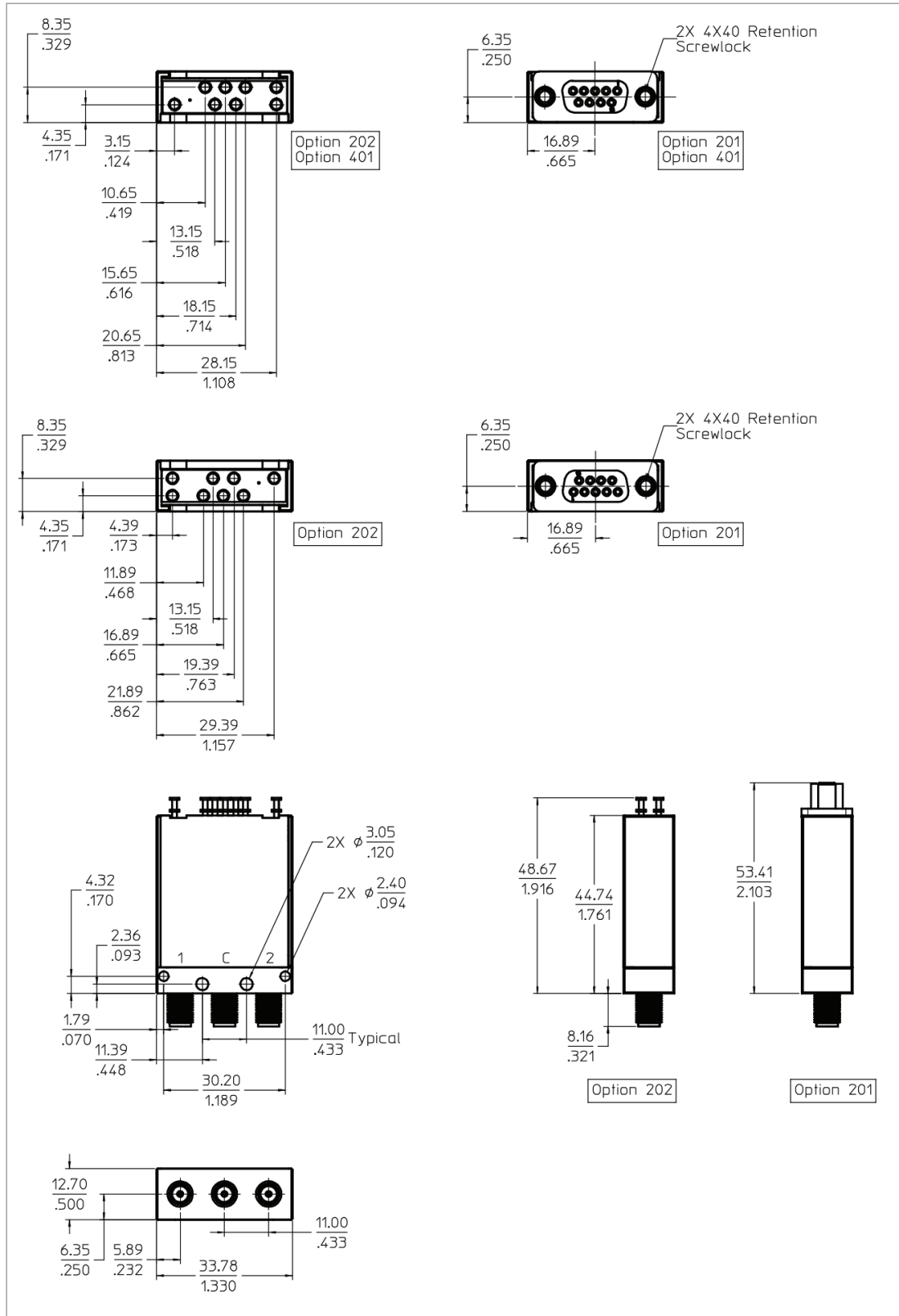
	DC	4 GHz	12.4 GHz	20 GHz	26.5 GHz
Option 301 <sup>1</sup>	125	120	109	99	90

Insertion loss (dB) =  $0.20 + \left(\frac{0.45}{26.5}\right) F$ , where F is specified in GHz

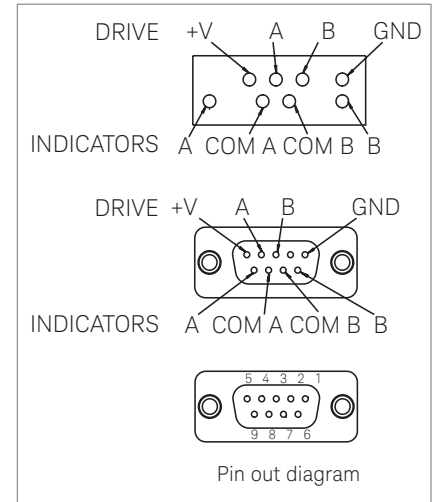
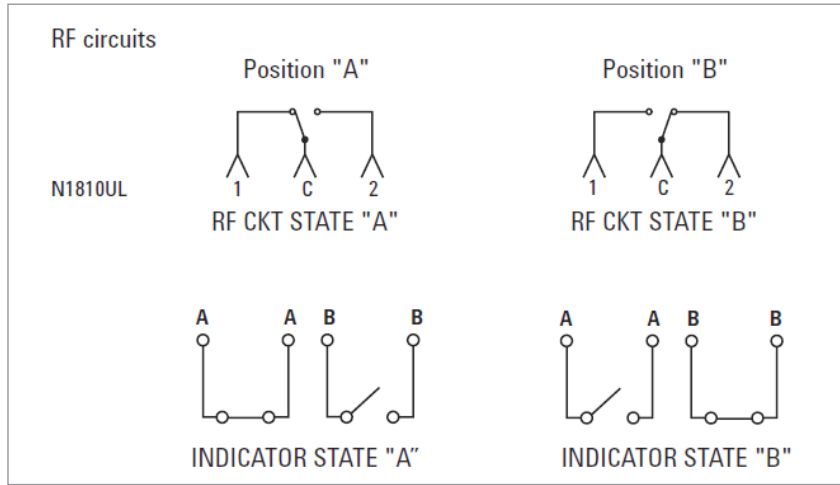
	DC	4 GHz	12.4 GHz	20 GHz	26.5 GHz
Option 302	0.2	0.27	0.41	0.53	0.65
SWR		DC-4 GHz	4-12.4 GHz	12.4-20 GHz	20-26.5 GHz
Option 302		1.10	1.20	1.23	1.45

- Option 301:  
Storage and cycling temperature: –55 °C to +65 °C  
Operating temperature: –25 °C to +65 °C

# N1810UL



# N1810UL

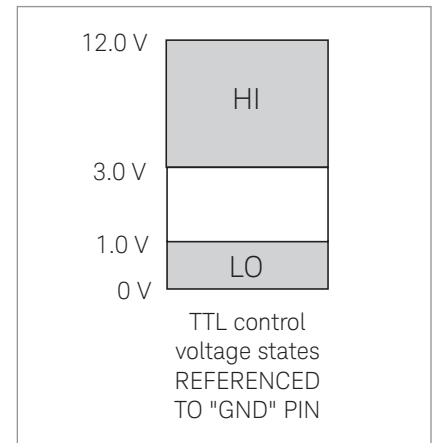


### Switch drive specifications N1810UL

Option	Parameter	Conditions	Min	Nominal	Max	Units
105	Supply voltage		4.5	5	7.0	V
	Supply current	Supply voltage = 5 V		300		mA
115 <sup>1</sup>	Supply voltage		12.0	15	20.0	V
	Supply current	Supply voltage = 15 V		125		mA
124 <sup>2</sup>	Supply voltage		20.0	24	32.0	V
	Supply current	Supply voltage = 24 V		75		mA

### TTL drive specifications

Option	Parameter	Conditions	Min	Nominal	Max	Units
401	High level input		3.0		12.0	V
	Low level input		0.0		1.0	V
	Max input current	Input voltage = 12.0 V			1.0	mA
		Input voltage = 3.85 V		0.25	0.5	mA

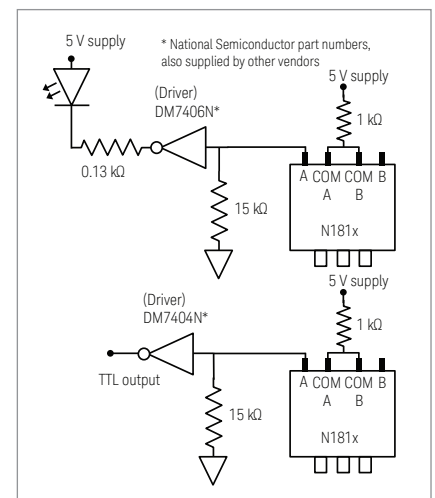


### Driving the switch\*

STD drive connect GND to ground		TTL drive connect GND to ground		RF state	INDICATOR state
A	B	A	B		
GND	OPEN	Hi	Lo	"A"	"A"
OPEN	GND	Lo	Hi	"B"	"B"
GND	GND	Hi	Hi	Indeterminate	NA
OPEN	OPEN	Lo	Lo	Switch remains at previous state	NA

GND: +V - Vsupply (see switch drive specification table, this page)  
 OPEN\* +V to +V - 1.5 volts  
 Hi 3.0 V to 12.0 V  
 Lo 0.0 V to 1.0 V Warning drive level below -0.25 V will damage TTL drive circuit!  
 \* WARNING! Use adapter cable 11764-60011 with 87130A switch driver  
 WARNING! Minimum switch spacing 6.0 mm (0.25 inch)

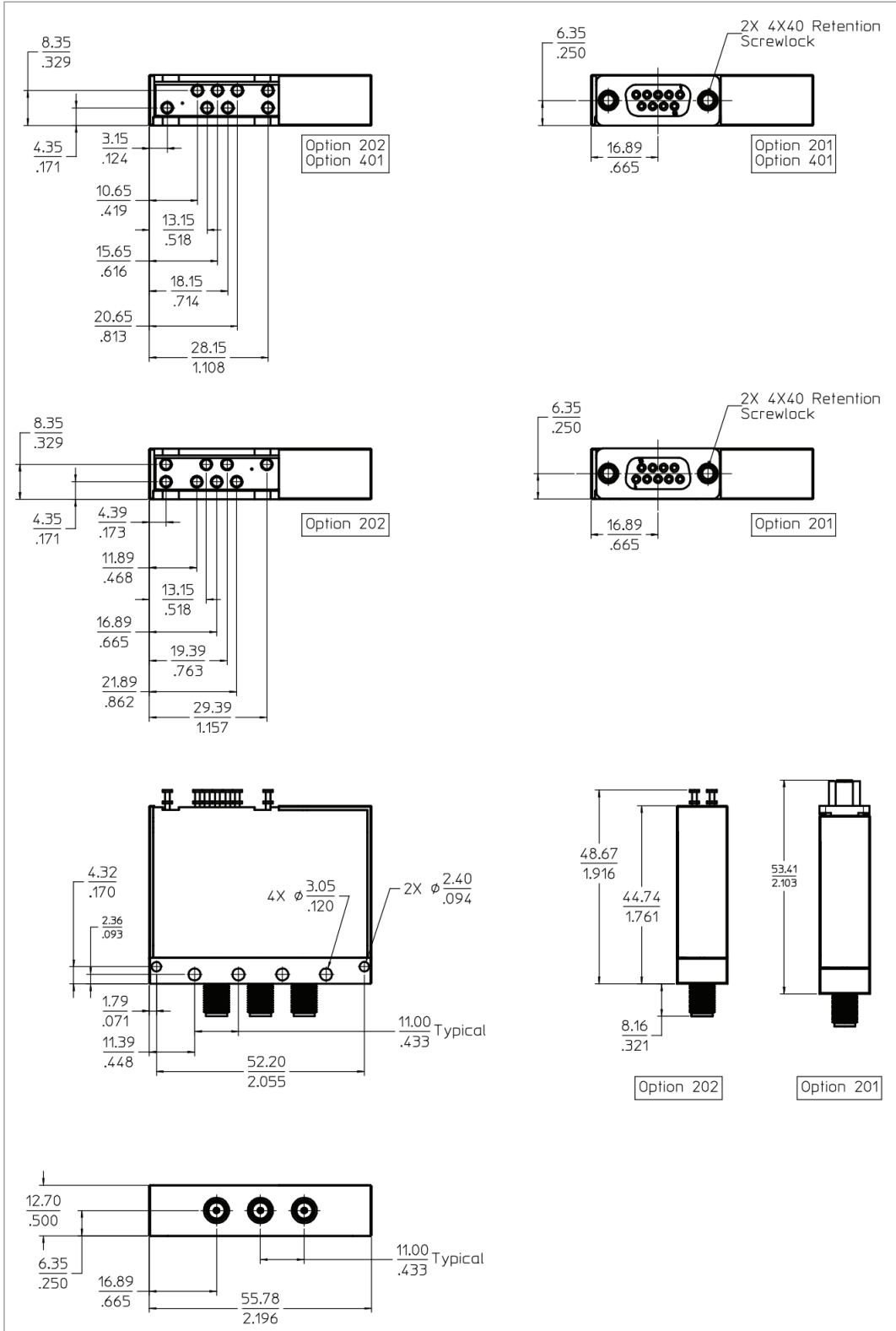
- Option 115: Operating life: 5 million cycles minimum, except 1 million cycles minimum when driven at voltages 18-20 VDC.
- Option 124: Operating life: Operating life: 5 million cycles minimum, except 1 million cycles minimum when driven at voltages 28-32 VDC.



Recommended indicator circuit

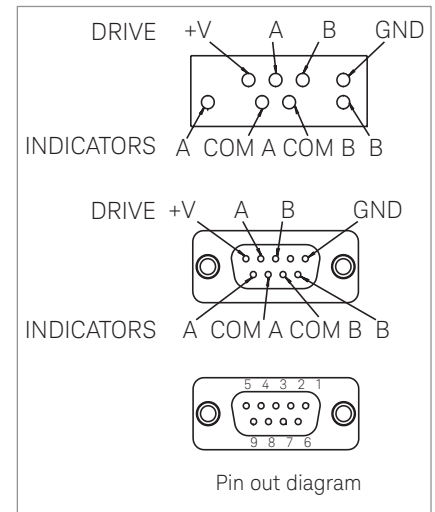
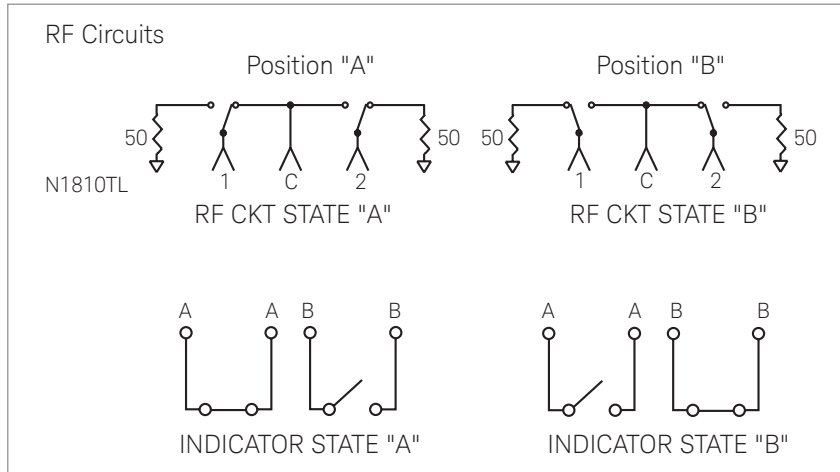
Note: For option 402 (position indicator): To achieve maximum system stability, it is recommended to do a pre-cycling of minimum 100 cycles if the switch has been in storage or idling for an extended period of time.

# N1810TL





# N1810TL



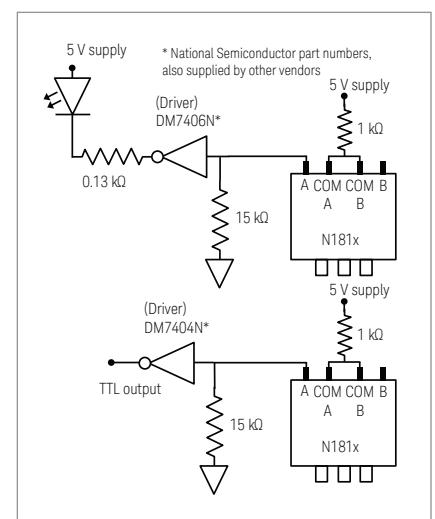
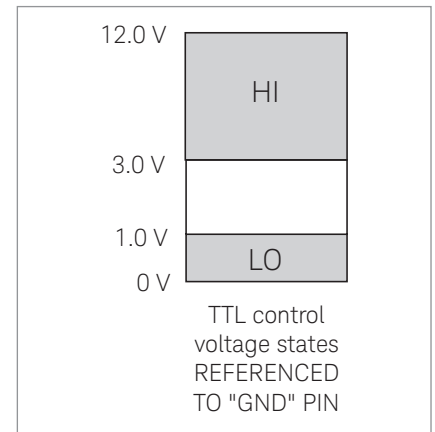
Switch drive specifications N1810TL, N1811TL, N1812UL						
Option	Parameter	Conditions	Min	Nominal	Max	Units
105	Supply voltage		4.5	5	7.0	V
	Supply current	Supply voltage = 5 V		600		mA
115 <sup>1</sup>	Supply voltage		12.0	15	20.0	V
	Supply current	Supply voltage = 15 V		250		mA
124 <sup>2</sup>	Supply voltage		20.0	24	32.0	V
	Supply current	Supply voltage = 24 V		150		mA

TTL drive specifications						
Option	Parameter	Conditions	Min	Nominal	Max	Units
401	High level input		3.0		12.0	V
	Low level input		0.0		1.0	V
	Max input current	Input voltage = 12.0 V			1.0	mA
		Input voltage = 3.85 V		0.25	0.5	mA

Driving the switch*					
STD drive connect GND to ground		TTL drive connect GND to ground		RF state	INDICATOR state
A	B	A	B		
GND	OPEN	Hi	Lo	"A"	"A"
OPEN	GND	Lo	Hi	"B"	"B"
GND	GND	Hi	Hi	Indeterminate	NA
OPEN	OPEN	Lo	Lo	Switch remains at previous state	NA

GND: +V - Vsupply (see switch drive specification table, this page)  
 OPEN\* +V to +V - 1.5 volts  
 Hi 3.0 V to 12.0 V  
 Lo 0.0 V to 1.0 V Warning drive level below -0.25 V will damage TTL drive circuit!  
 \* WARNING! Use adapter cable 11764-60011 with 87130A switch driver  
 WARNING! Minimum switch spacing 6.0 mm (0.25 inch)

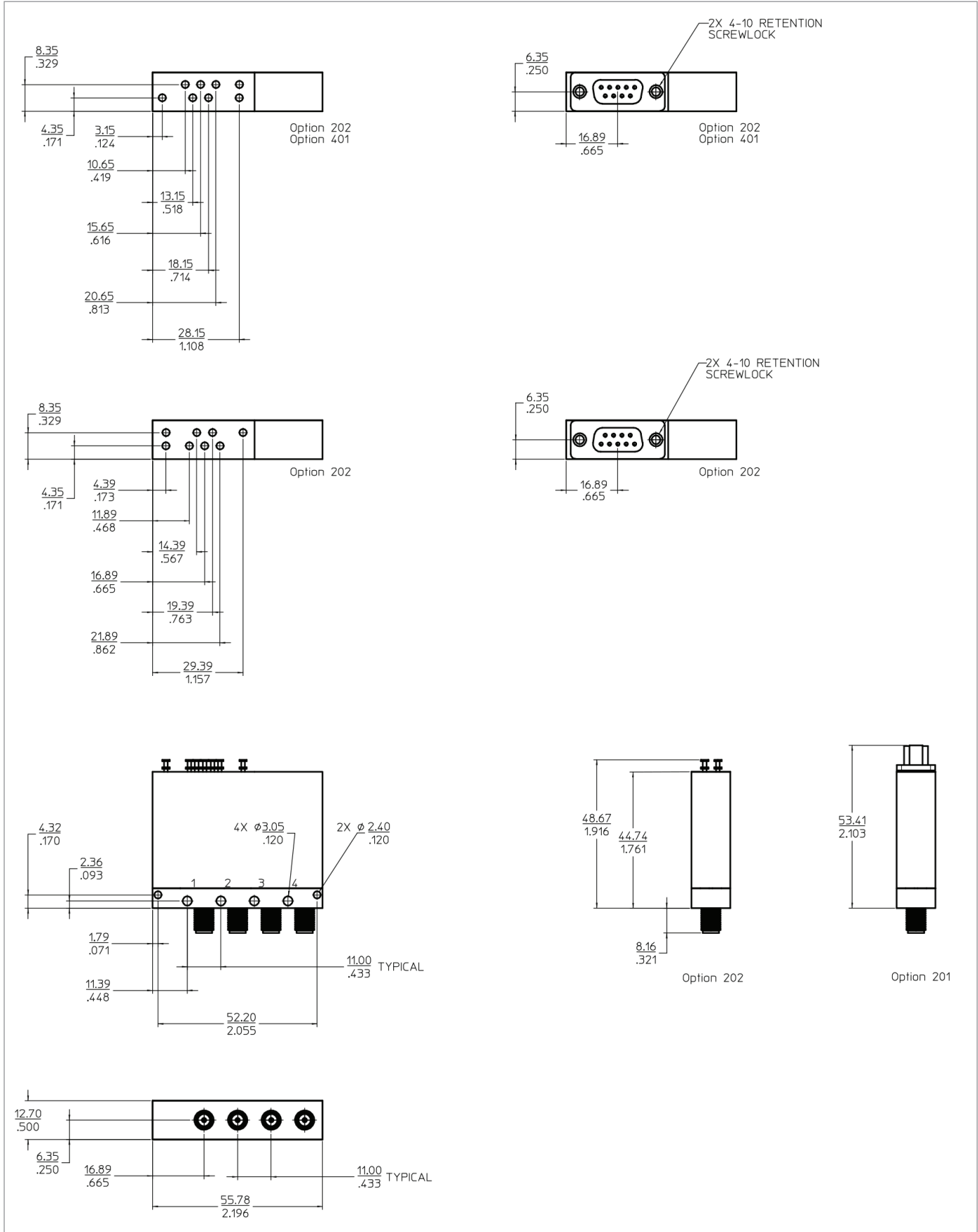
- Option 115: Operating life: 5 million cycles minimum, except 1 million cycles minimum when driven at voltages 18-20 VDC.
- Option 124: Operating life: Operating life: 5 million cycles minimum, except 1 million cycles minimum when driven at voltages 28-32 VDC.



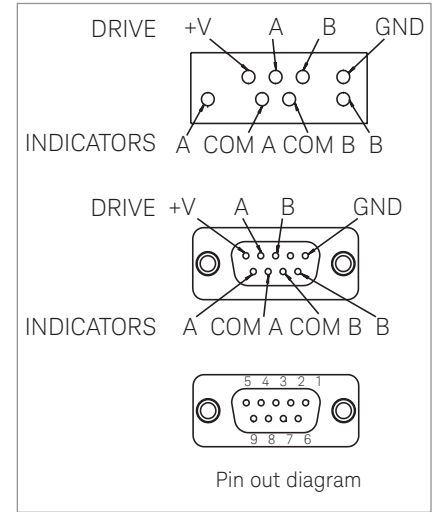
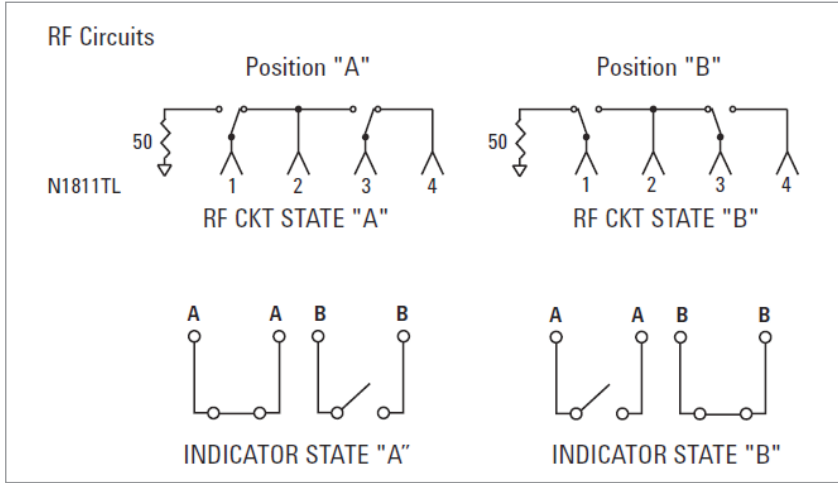
Recommended indicator circuit

Note: For option 402 (position indicator): To achieve maximum system stability, it is recommended to do a pre-cycling of minimum 100 cycles if the switch has been in storage or idling for an extended period of time.

# N1811TL



# N1811TL



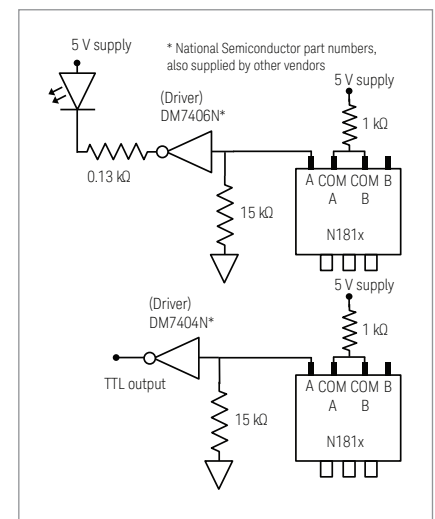
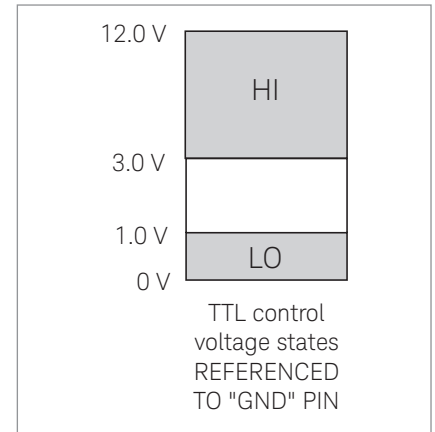
Switch drive specifications N1810TL, N1811TL, N1812UL						
Option	Parameter	Conditions	Min	Nominal	Max	Units
105	Supply voltage		4.5	5	7.0	V
	Supply current	Supply voltage = 5 V		600		mA
115 <sup>1</sup>	Supply voltage		12.0	15	20.0	V
	Supply current	Supply voltage = 15 V		250		mA
124 <sup>2</sup>	Supply voltage		20.0	24	32.0	V
	Supply current	Supply voltage = 24 V		150		mA

TTL Drive specifications						
Option	Parameter	Conditions	Min	Nominal	Max	Units
401	High level input		3.0		12.0	V
	Low level input		0.0		1.0	V
	Max input current	Input voltage = 12.0 V			1.0	mA
		Input voltage = 3.85 V		0.25	0.5	mA

Driving the switch*						
STD drive connect		TTL drive connect		RF state	INDICATOR state	
GND to ground		GND to ground				
A	B	A	B			
GND	OPEN	Hi	Lo	"A"	"A"	
OPEN	GND	Lo	Hi	"B"	"B"	
GND	GND	Hi	Hi	Indeterminate	NA	
OPEN	OPEN	Lo	Lo	Switch remains at previous state	NA	

GND: +V - Vsupply (see switch drive specification table, this page)  
 OPEN\* +V to +V - 1.5 volts  
 Hi 3.0 V to 12.0 V  
 Lo 0.0 V to 1.0 V Warning drive level below -0.25 V will damage TTL drive circuit!  
 \* WARNING! Use adapter cable 11764-60011 with 87130A switch driver  
 WARNING! Minimum switch spacing 6.0 mm (0.25 inch)

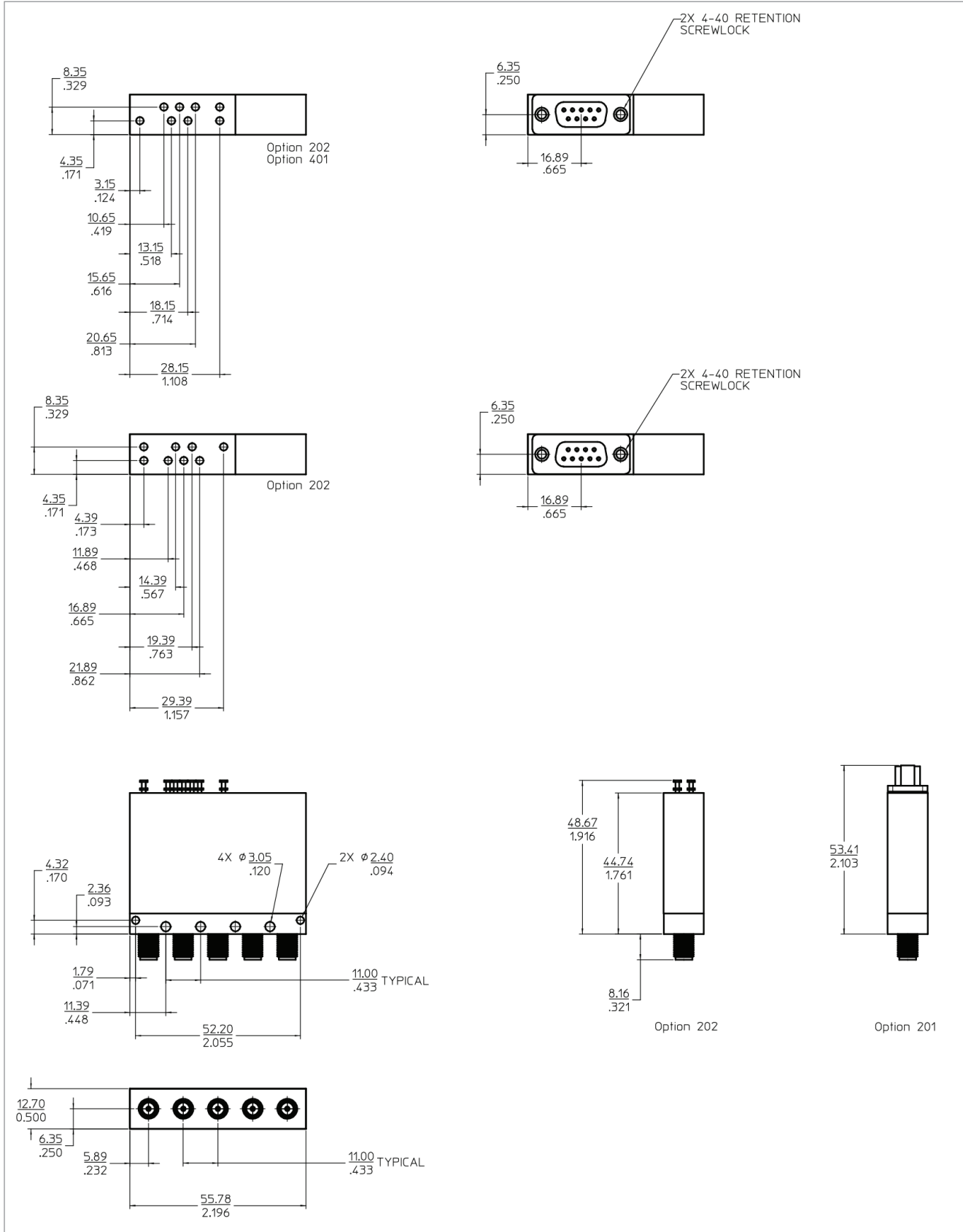
- Option 115: Operating life: 5 million cycles minimum, except 1 million cycles minimum when driven at voltages 18-20 VDC.
- Option 124: Operating life: 5 million cycles minimum, except 1 million cycles minimum when driven at voltages 28-32 VDC.



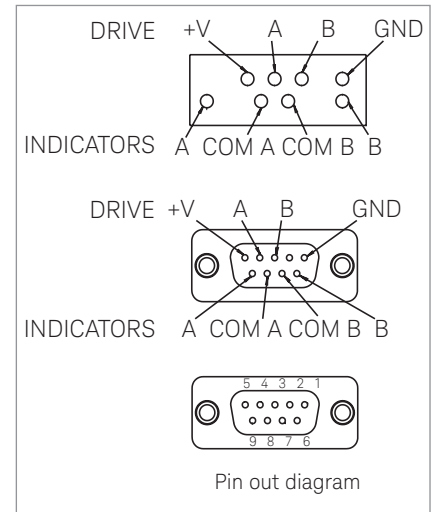
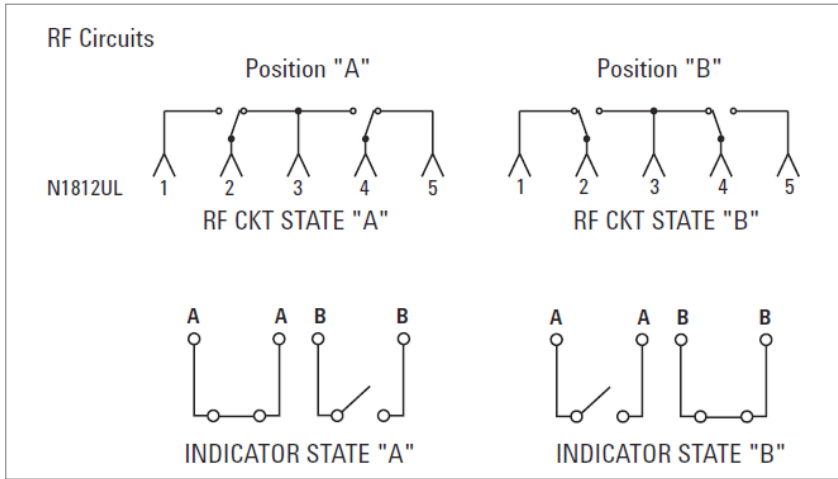
Recommended indicator circuit

Note: For option 402 (position indicator): To achieve maximum system stability, it is recommended to do a pre-cycling of minimum 100 cycles if the switch has been in storage or idling for an extended period of time.

# N1812UL



# N1812UL



Switch drive specifications N1810TL, N1811TL, N1812UL						
Option	Parameter	Conditions	Min	Nominal	Max	Units
105	Supply voltage		4.5	5	7.0	V
	Supply current	Supply voltage = 5 V		600		mA
115 <sup>1</sup>	Supply voltage		12.0	15	20.0	V
	Supply current	Supply voltage = 15 V		250		mA
124 <sup>2</sup>	Supply voltage		20.0	24	32.0	V
	Supply current	Supply voltage = 24 V		150		mA

TTL drive specifications						
Option	Parameter	Conditions	Min	Nominal	Max	Units
401	High level input		3.0		12.0	V
	Low level input		0.0		1.0	V
	Max input current	Input voltage = 12.0 V			1.0	mA
		Input voltage = 3.85 V		0.25	0.5	mA

Driving the switch*					
STD drive connect	TTL drive connect	RF state	INDICATOR state		
GND to ground	GND to ground		A	B	
A	B	A	B		
GND	OPEN	Hi	Lo	"A"	"A"
OPEN	GND	Lo	Hi	"B"	"B"
GND	GND	Hi	Hi	Indeterminate	NA
OPEN	OPEN	Lo	Lo	Switch remains at previous state	NA

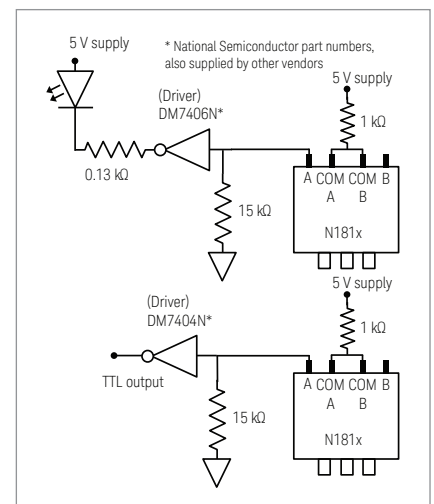
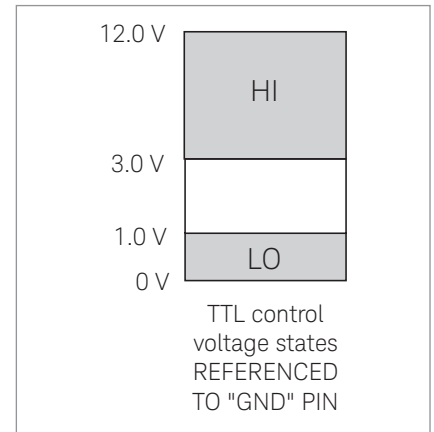
GND: +V - Vsupply (see switch drive specification table, this page)

OPEN\* +V to +V - 1.5 volts

Hi 3.0 V to 12.0 V

Lo 0.0 V to 1.0 V Warning drive level below -0.25 V will damage TTL drive circuit!

\* WARNING! Use adapter cable 11764-60011 with 87130A switch driver  
WARNING! Minimum switch spacing 6.0 mm (0.25 inch)



Recommended indicator circuit

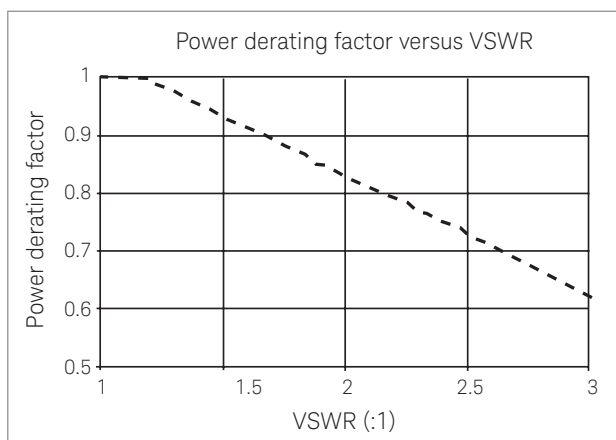
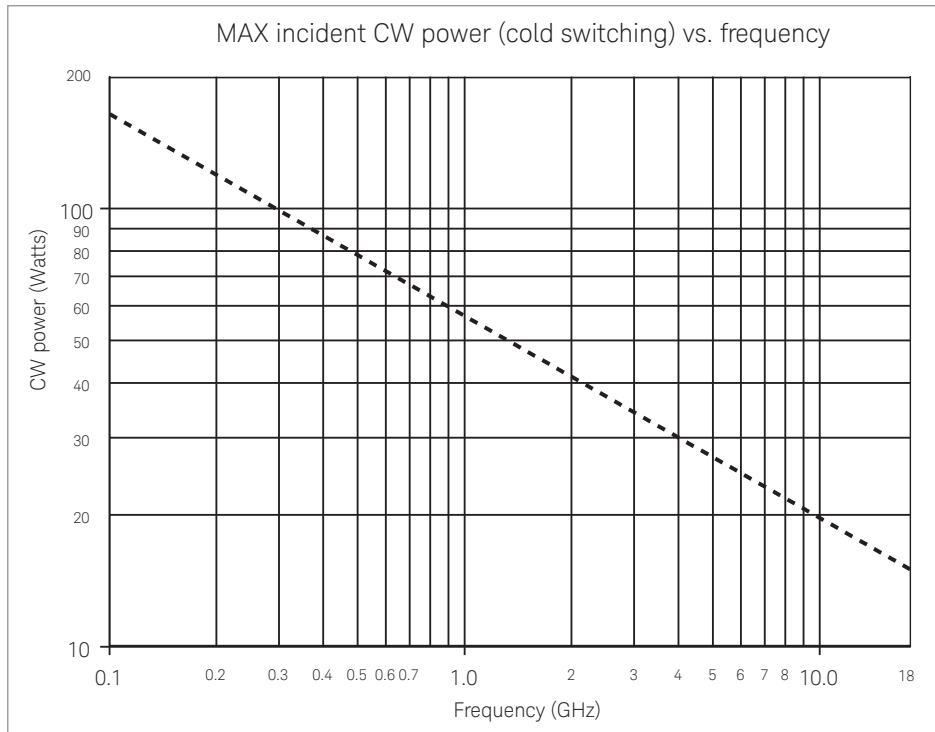
- Option 115: Operating life: 5 million cycles minimum, except 1 million cycles minimum when driven at voltages 18-20 VDC.
- Option 124: Operating life: 5 million cycles minimum, except 1 million cycles minimum when driven at voltages 28-32 VDC.

Note: For option 402 (position indicator): To achieve maximum system stability, it is recommended to do a pre-cycling of minimum 100 cycles if the switch has been in storage or idling for an extended period of time.

## Supplemental Characteristics

### General operating characteristics – N181x series

Switching speed	Repeatability	Life <sup>1,2</sup>	Impedance
< 15 ms	0.03 dB at 40 GHz 0.05 dB at 50 GHz 0.08 dB at 67 GHz	> 5 million cycles	50 Ω



### Reference conditions

- Cold switching only (NO hot switching)
- Ambient temperature of 75 °C or less<sup>3</sup>
- Sea level (0.88 derating at 15,000 ft.)
- Load VSWR < 1.2  
(see graph for derating above 1.2 VSWR)

1. Option 115: Operating life: 5 million cycles minimum, except 1 million cycles minimum when driven at voltages 18-20 VDC.  
 2. Option 124: Operating life: 1 million cycles minimum.

## Environmental

The switch is designed to fully comply with Keysight Technologies' product operating environment specifications. The following summarizes the environmental specifications for these products (Class B1).

### Temperature<sup>1</sup>

Operating:	-25 to +75 °C
Storage:	-55 to +85 °C
Cycling:	-55 to +85 °C, 10 cycles per MIL-STD 202F, 170D, Condition A (modified)

### Vibration

Operating:	7 g, 5-2000 Hz at 0.25 in. p-p
Survival:	20 g, 20-2000 Hz at 0.06 in. p-p, 4 min/cycle, 4 cycles/axis
Random:	2.41 g (rms.) 10 min/axis
Shock:	Half sine: 500 g at 0.5 ms, 3 drops/direction, 18 total
Operating:	50 g at 6 ms, 6 directions

### Humidity

Operating:	15 to 95 % relative humidity
Storage:	65 °C, 95 % RH, 10 days, MIL-STD 202F, Method 106E

### Altitude

Operating:	15,000 feet/4.6 km
Storage:	50,000 feet/15.3 km, MIL-STD 202F, Method 105C, Condition B

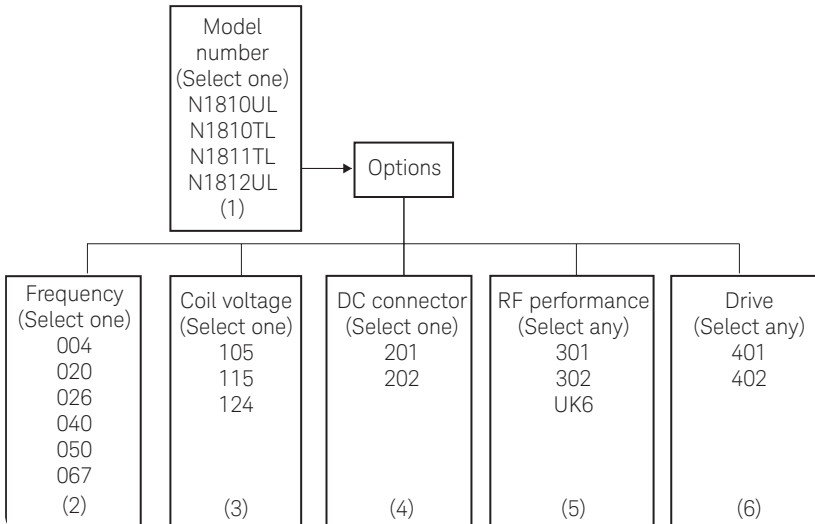
Troubleshoot guide				
Probable cause	Test	Allowable range		Remedy
		Low value	High value	
Not connected to supply		See drive specifications		Connect +V to power supply
Supply not turned on				Turn on power supply
Supply voltage less than minimum	Measure voltage from control pin to +V	See drive specifications		
Supply current low	Measure current draw with drive pin selected	See drive specifications		Increase drive voltage or reduce drive line resistance
OPEN state voltage too low	Measure voltage from control pin to +V	(+V-1.5) volts		+V volts
Select lines not at ground (STD DRIVE)	Measure voltage from drive select pin to ground			Eliminate ground loops and lead high resistance
TTL "LOW" voltage too high	Measure voltage from ground pin to TTL drive pin	See drive specifications		Connect ground pin to ground
TTL "LOW" voltage < 0.0 volts	Measure voltage from ground pin to TTL drive pin	See drive specifications		Eliminate ground loops
TTL GND pin not grounded				Connect GND pin to ground
Driving switch with 87130A				Use adapter cable 11764-60011

1. Option 301: Storage and cycling temperature: -55 °C to +65 °C Operating temperature: -25 °C to +65 °C  
 Option 105: Operating temperature: -5 °C to +75 °C  
 Option 115: Operating temperature: -15 °C to +75 °C

## Ordering Information

**Required:** Specify one model number, one frequency range, one coil voltage, and one DC connector type (must select one of each)

**Optional:** Specify RF performance enhancements and drive options (may select any, all, or none)



1. Select a model to fit your application. (Required)
  - N1810UL – Unterminated latching 3-port
  - N1810TL – Terminated latching 3-port
  - N1811TL – Terminated latching 4-port
  - N1812UL – Unterminated latching 5-port
2. Select a frequency range. (Required)
  - 004 – DC to 4 GHz
  - 020 – DC to 20 GHz
  - 026 – DC to 26.5 GHz
  - 040 – DC to 40 GHz
  - 050 – DC to 50 GHz
  - 067 – DC to 67 GHz
3. Select a coil voltage level. (Required)
  - 105\* – 5 volts
  - 115 – 15 volts
  - 124 – 24 volts
4. Select a DC connector type. (Required)
  - 201 – “D” subminiature 9 pin female
  - 202 – Solder lugs
5. Select RF performance enhancements. (Optional)
  - 301 – Increased isolation
  - 302 – Reduced standing wave ratio and insertion loss
  - UK6 – Calibration certificate with test data
6. Select drive options. (Optional)
  - 401 – TTL/CMOS compatible 5 V drive
  - 402 – Position indicators

## Ordering example

For an unterminated 5 port switch, operating up to 20 GHz, with 15 volt coils, D-sub connector, high isolation, and TTL, the order should look as follows: N1812UL Option 020 115 201 301 401.

Switch units beginning with the serial numbers listed below or higher have current interrupt built-in as a default.

- N1810UL-MY07244672
- N1810TL-MY07247927
- N1811TL-MY07244660
- N1812UL-MY07240668

## Related Literature

*Keysight Technologies Bench and System Switching Products*  
Literature Number 5989-9872EN

*Keysight RF and Microwave Switch Selection Guide*  
Literature Number 5989-6031EN

*Keysight 11713B/C Attenuator/Switch Drivers Configuration Guide*  
Literature Number 5989-7277EN

## Application Notes

*Power Handling Capability of Electromechanical Switches*  
Literature Number 5989-6032EN

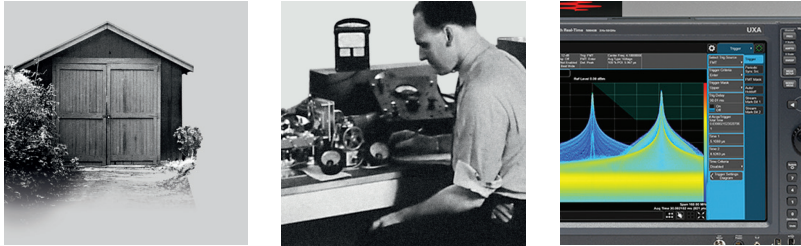
*How Operating Life and Repeatability of Keysight’s Electromechanical Switches Minimize System Uncertainty*  
Literature Number 5989-6085EN

\* Includes options 402



## From Hewlett-Packard through Agilent to Keysight

For more than 75 years, we've been helping you unlock measurement insights. Our unique combination of hardware, software and people can help you reach your next breakthrough. **Unlocking measurement insights since 1939.**



1939

THE FUTURE

### myKeysight

#### myKeysight

[www.keysight.com/find/mykeysight](http://www.keysight.com/find/mykeysight)

A personalized view into the information most relevant to you.



#### Three-Year Warranty

[www.keysight.com/find/ThreeYearWarranty](http://www.keysight.com/find/ThreeYearWarranty)

Keysight's committed to superior product quality and lower total cost of ownership. Keysight is the only test and measurement company with three-year warranty standard on all instruments, worldwide. And, we provide a full one-year warranty on many accessories, calibration devices, systems and custom products.



#### Keysight Assurance Plans

[www.keysight.com/find/AssurancePlans](http://www.keysight.com/find/AssurancePlans)

Up to ten years of protection and no budgetary surprises to ensure your instruments are operating to specification, so you can rely on accurate measurements.

### Keysight Infoline

#### Keysight Infoline

[www.keysight.com/find/service](http://www.keysight.com/find/service)

Keysight's insight to best in class information management. Free access to your Keysight equipment company reports and e-library.

#### Keysight Channel Partners

[www.keysight.com/find/channelpartners](http://www.keysight.com/find/channelpartners)

Get the best of both worlds: Keysight's measurement expertise and product breadth, combined with channel partner convenience.

[www.keysight.com/find/switches](http://www.keysight.com/find/switches)

[www.keysight.com/find/mta](http://www.keysight.com/find/mta)

For more information on Keysight Technologies' products, applications or services, please contact your local Keysight office. The complete list is available at: [www.keysight.com/find/contactus](http://www.keysight.com/find/contactus)

### Americas

Canada	(877) 894 4414
Brazil	55 11 3351 7010
Mexico	001 800 254 2440
United States	(800) 829 4444

### Asia Pacific

Australia	1 800 629 485
China	800 810 0189
Hong Kong	800 938 693
India	1 800 11 2626
Japan	0120 (421) 345
Korea	080 769 0800
Malaysia	1 800 888 848
Singapore	1 800 375 8100
Taiwan	0800 047 866
Other AP Countries	(65) 6375 8100

### Europe & Middle East

Austria	0800 001122
Belgium	0800 58580
Finland	0800 523252
France	0805 980333
Germany	0800 6270999
Ireland	1800 832700
Israel	1 809 343051
Italy	800 599100
Luxembourg	+32 800 58580
Netherlands	0800 0233200
Russia	8800 5009286
Spain	800 000154
Sweden	0200 882255
Switzerland	0800 805353
	Opt. 1 (DE)
	Opt. 2 (FR)
	Opt. 3 (IT)
United Kingdom	0800 0260637

For other unlisted countries:  
[www.keysight.com/find/contactus](http://www.keysight.com/find/contactus)  
(BP-02-10-16)



[www.keysight.com/go/quality](http://www.keysight.com/go/quality)  
Keysight Technologies, Inc.  
DEKRA Certified ISO 9001:2015  
Quality Management System