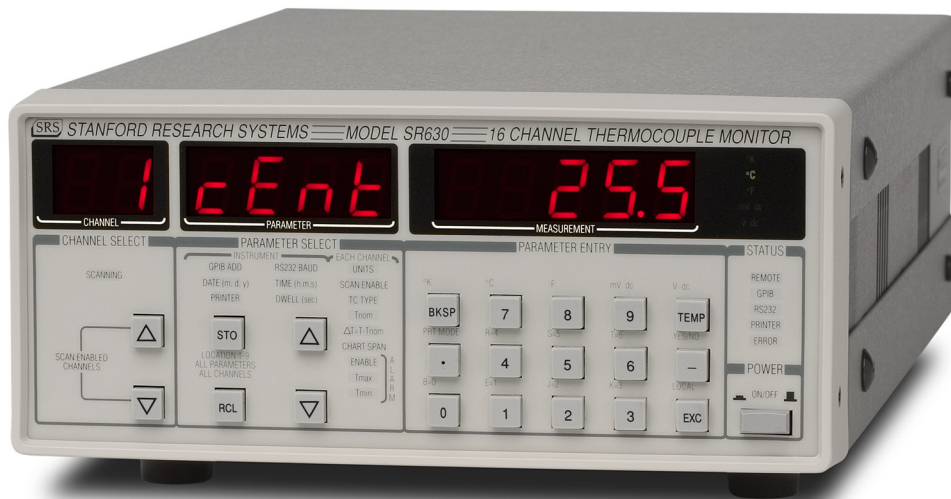


# Thermocouple Monitor

SR630 — Thermocouple monitor (16-channel)



## SR630 Thermocouple Monitor

- 16 channels
- B, E, J, K, R, S and T type thermocouples
- 0.1 °C resolution
- Displays °C, °F, K and VDC
- 2,000 point non-volatile memory
- Four analog outputs proportional to temperature
- GPIB, RS-232 and printer interfaces

• SR630 ... \$2495 (U.S. list)

### Temperature Monitor

The SR630 is a 16-channel thermocouple monitor designed to read, scan, print and log temperatures or voltages. You can use any one of seven standard thermocouple types to read temperatures from  $-200\text{ }^{\circ}\text{C}$  to  $+1700\text{ }^{\circ}\text{C}$ . For remote monitoring applications, the SR630 can time-stamp and store up to 2000 readings in non-volatile memory for later analysis.

Temperature readings from the SR630 can be viewed on the front panel or queried via the instrument's standard RS-232 or GPIB interfaces. In addition, the standard Centronics printer port provides convenient hardcopy output in either tabular or strip-chart format.

### Voltage Monitor

The SR630 can also be configured as a 16-channel DC voltmeter with full-scale ranges from 30 mV to 100 V (1 mV resolution). As a voltmeter, the unit has 0.05 % accuracy and 1  $\mu\text{V}$  input offset drift. Each channel can be set independently to monitor either temperature or voltage, giving the SR630 even more flexibility in your application. Four rear-panel outputs are also available to provide a voltage proportional to the temperature of the first four input channels. The voltage outputs can be used to drive recorders or to control external instrumentation.

# SR630 Thermocouple Monitor

## Inputs

Sixteen screw-terminal inputs are mounted on a rear-panel isothermal block for cold junction compensation. The isolated differential inputs have a 250 V breakdown level, allowing the SR630 to tackle difficult applications such as temperature profiling of electrically live equipment. Each of the 16 channels may be independently set to display in units of °C, °F, K, mV or V. Similarly, thermocouple type, nominal temperature, temperature limit, and alarms may be uniquely set for each channel, providing complete flexibility in the configuration of the instrument. Access to any channel parameter is provided through the front panel or via the computer interfaces. The SR630 can store up to nine instrument configurations including thermocouple type and temperature limits for all 16 channels.

## Outputs

There are four analog outputs that are proportional to the readings on channels one through four. Both the slope (m) and offset (b) of the equation,  $V_{out} = \pm mX + b$ , are changed by setting the nominal temperature and chart span for the corresponding channel. X is either temperature or voltage, depending on the setting for each channel.

You may use the analog outputs to drive chart recorders, or they can provide a feedback signal for proportional temperature control systems. They may also be used as fixed-level, analog control signals (set via the computer interfaces).

## Alarms

Each channel can be programmed individually with an upper and lower temperature limit. An audio alarm and a relay closure indicate when any channel exceeds its preset temperature or voltage limits. The front-panel LED display will indicate which channel has exceeded its limit.

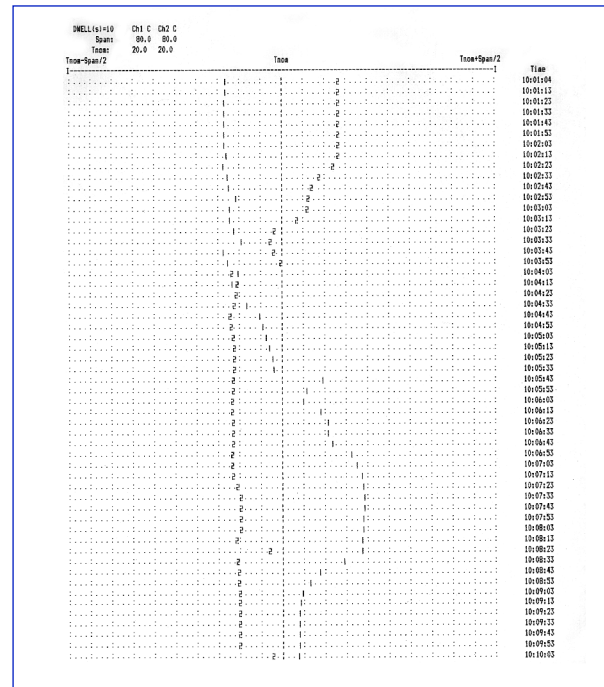
## Data Logging

An internal, battery backed-up clock/calendar is used to time-stamp temperature readings. The SR630 can be set to scan,

time-stamp, and record data on up to 16 channels at intervals from 10 to 9999 seconds. Data is either sent immediately to the printer or stored in the internal 2,000 point buffer for output at a later time (via GPIB or RS-232).

## Built-In Printer Interface

A standard Centronics printer interface makes it simple to get hardcopy output of temperature or voltage scans. Two hardcopy formats are provided. The SR630 can print a continuous strip chart showing up to 16 different temperatures (see example below). In addition, data can be printed in a tabular format (see example below and left) which logs the time, date, and temperature or voltage for each channel.



Strip chart output

TIME	DATE	Ch1 C	Ch2 C	Ch3 C	Ch4 C	Ch5 C	Ch6 C	Ch7 C	Ch8
10:31:05	25/06/92	20.5	37.6	29.4	20.4	27.4	27.3	27.4	27
10:31:15	25/06/92	20.5	37.5	29.3	20.3	27.5	27.5	27.5	27
10:31:25	25/06/92	20.0	37.1	29.3	19.8	27.7	27.8	27.8	27
10:31:35	25/06/92	19.4	36.2	28.6	18.5	28.1	27.9	28.3	28
10:31:45	25/06/92	20.1	36.1	27.8	17.6	30.6	30.5	30.6	30
10:31:55	25/06/92	20.5	36.5	27.6	16.6	31.2	31.1	31.3	31
10:32:05	25/06/92	20.0	35.0	26.0	14.6	32.1	31.7	32.2	32
10:32:15	25/06/92	15.1	29.5	20.9	10.3	33.1	32.5	33.0	33
10:32:25	25/06/92	10.4	26.1	18.0	8.2	34.9	34.4	34.8	34
10:32:35	25/06/92	11.5	26.9	19.6	9.9	38.1	38.1	38.5	38
10:32:45	25/06/92	12.9	28.5	20.1	10.9	38.8	38.8	38.8	38
10:32:55	25/06/92	13.5	28.9	20.3	11.5	38.5	38.5	38.5	38
10:33:05	25/06/92	14.3	29.6	20.9	12.3	38.6	38.6	38.7	38
10:33:15	25/06/92	15.4	30.7	22.5	13.4	38.7	38.7	38.7	38
10:33:25	25/06/92	16.3	31.6	23.5	14.6	38.6	38.6	38.6	38
10:33:35	25/06/92	17.0	32.5	24.6	15.6	38.5	38.4	38.4	38
10:33:45	25/06/92	17.8	33.3	25.8	16.4	38.2	38.3	38.2	38
10:33:55	25/06/92	18.3	33.9	26.3	17.2	38.0	38.0	38.0	38

Tabular output

**Thermocouple**

Channels	16
Thermocouple types	B, E, J, K, R, S, T
Display units	°C, °F and K
Display resolution	0.1 °C
Temperature displays	Actual, Nominal, or Offset
Accuracy	0.5 °C for J, K, E and T 1.0 °C for R, S and B Errors are for the SR630 only. Standard errors for thermocouple wire are 2 to 5 times the error due to the SR630.

**Inputs**

Channels	16
Input type	Independent, floating and differential
Input resistance	10 MΩ between + and – terminals, >1 GΩ to ground
Input capacitance	0.001 μF
Input bias current	<100 pA
Input protection	250 Vrms
Open circuit check	250 μA
Common mode	±200 VDC

**Voltmeter**

Full-scale display	(±9,999, ±99.99 or ±999.9) mVDC, (±9,999 or ±99.99) VDC
Range select	Automatic
Resolution	±1 of least significant displayed digit
Offset	±2 of least significant displayed digit
Gain accuracy	0.05 %
Conversion rate	10/s for 50 Hz line, 12/s for 60 Hz
Line rejection	>100:1

**Scanning and Data Logging**

Scanning	Selected channels will be scanned. Dwell time between scans is set from 10 s to 9999 s.
Alarm	Temperature or voltage limit for each channel
Scan enable	All channels may be scanned or skipped
Printer output	Voltages, temperatures, time and date as a list or in a graphical format
Data memory	Last 2000 measurements in battery backed-up memory

**General**

Analog outputs	Four analog voltage outputs proportional to temperature of channels 1, 2, 3 and 4
Relay output	Switching 10 A
Store and recall	Nine locations for instrument set-up
Interfaces	RS-232, GPIB and Centronics ports (standard). All instrument functions may be set and read via RS-232 or GPIB.
Power	10 W, 100/120/220/240 VAC, 50/60 Hz
Dimensions	8.5" × 3.5" × 13" ( WHD )
Weight	9 lbs.
Warranty	One year parts and labor on defects in materials and workmanship



SR630 rear panel

**Ordering Information**

SR630	Thermocouple monitor	\$2495
O630KF1	K-type thermocouples, 5', fiberglass, qty. 5	\$100
O630KF2	K-type thermocouples, 10', fiberglass, qty. 5	\$100
O630KT1	K-type thermocouples, 5', teflon, qty. 5	\$100
O630KT2	K-type thermocouples, 10', teflon, qty. 5	\$100
O630RMD	Double rack mount kit	\$100
O630RMS	Single rack mount kit	\$100