

Data Sheet

VIAVI

OneAdvisor 800

Modular test platform designed for use in the installation and maintenance of fiber, wireless and transport applications.

The VIAVI OneAdvisor 800 is the first test tool designed to address the challenges of a modern network field technician. By rolling all the key test capabilities into one portable tester and combining it with easy-to-use test process and reporting automation, VIAVI has equipped wireline and wireless service providers, equipment manufacturers, system integrators, and contractors to meet the work-speed and test coverage requirements for telecommunication networks buildouts and maintenance.

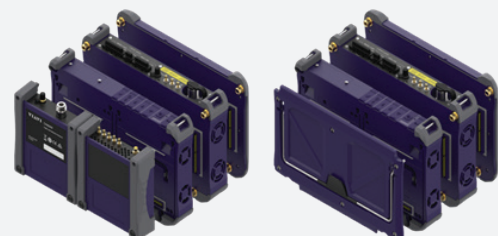


Key Features and Benefits

- Extended modularity; dual-bay, detachable or plug-in (via Module carrier) capability that can be combined
- Job Manager for workflow automation for seamless job between all test functions– Enabled by cloud base StrataSync service
- SAA (Smart Access Anywhere) for Remote Access and coaching

Measurements

- RF Spectrum Analyzer and Signal Analyzer for 4G and 5G
- Singlemode and multimode OTDR
- DWDM OTDR
- Bi-directional Optical Loss and ORL Test
- Optical spectrum analysis
- DWDM optical channel checker
- Broadband optical Power level
- Connector end face inspection
- Ethernet and protocol testing
- RF power sensor
- Cable and Antenna Analyzer



General Information

Inputs and Outputs	
USB	2x USB 2.0 Host
Memory Card	1x micro SD
LAN	RJ-45, 1000 Base-T
Audio	Built-in speaker 1x USB-C for Audio output
Display	8", 1280 x 800 resolution
Power	
Connector	Rectangular DC Jack
External DC Input	19 VDC
Power consumption	Mainframe: 10.8W (w/ 70% brightness setting)
Battery	
Type	14.4 V, 6800 mAh (Lithium ion)
Operating time	MF (mainframe) only: > 8hrs
Charging time	100 % charging
	Standard (one battery): > 2:2 hrs
	Up to 80 % charging
Charging temperature	Standard (one battery): > 1:40 hrs
	0 to 45°C (32 to 113°F) ≤ 85% RH
Discharging temperature	-20 to 55°C (-4 to 131°F) ≤ 85% RH
Storage temperature	-20 to 60°C (-4 to 140°F)
Operating Temperature	
0 to 40°C (32 to 104°F)	AC Power with battery charging
-10 to 55°C (14 to 131°F)	Battery discharging condition
Storage temperature	
-20 to 60°C (-4 to 140°F)	
Maximum humidity	
95% RH (noncondensing)	
Memory	
Internal	6.2 GB total, shared by system memory

External	Micro-SD: up to 32GB USB flash memory: limited by size of the flash drive Supported file system: FAT, FAT3, ext4
----------	--

Environmental	
Shock and Vibration	MIL-PRF-28800F
Bench handling	MIL-PRF-28800F
Drop	MIL-PRF-28800F ETSI EN 300 029-2-7
EMC	IEC/EN 61326-1 FCC part 15B ICES-003

Size and weight (Mainframe)	
Weight	2.0 kg (4.4 lb) without module (including battery)
Size (W x H x D)	270 x 170 x 60 mm (10.6 x 6.7 x 2.3 in) without module

Size and weight (Fiber module receptacle)	
Weight	0.8 kg (1.7 lb) without test module
Size (W x H x D)	270 x 170 x 50 mm (10.6 x 6.7 x 2 in)

Built-In hardware option

ONA-PMVFL

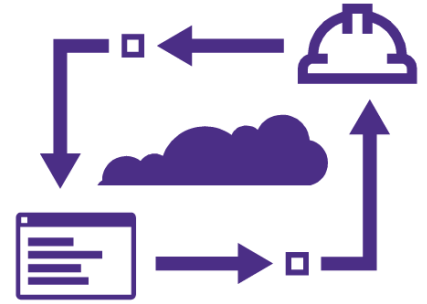
Power Meter	
Power Level	+10 to - 60 dBm
Calibrated wavelength	850, 1310, 1550nm
Connector type	Universal push/pull (UPP)
Visual Fault Locator	
Wavelength	650 nm +/- 15nm
Output power level	< 1mW
Laser safety	Class 2 laser

Platform Ordering Information

Part	Description
ONA-800A-MF2, ONA-800A-MF2-F, ONA-800A-MF2-T	OneAdvisor 800 Mainframe with Display
ONA-800A-MF2G-T	OneAdvisor ONA-800A Mainframe with Display - no WiFi and Bluetooth Radios
Solution Hardware Modules	
E81FMC1	Fiber module receptacle for E8100-series fiber modules
Software Options for OneAdvisor Platform	
ONA-MF-BT	Bluetooth connectivity
ONA-MF-WIFI	WiFi connectivity
SAA-ADVISOR	Smart Access Anywhere for CellAdvisor Products
Accessories for OneAdvisor Platform	
FBP-SD101	Kit FBP-P5000I Digital Probe FiberChekPro SW Case And Tips
FIT-FC-KIT3	Kit FiberChek Autofocus WiFi Microscope Tips for LC/PC SC/PC and SC/APC Case
G700050125	120 watts DC to DC car cigarette lighter charger adapter
G700050127	OneAdvisor 800 AC/DC Power Adapter 160 W 19 V
PS-330W24V	OneAdvisor 800 AC/DC Power Adapter 330 W 19 V
G700050150	Internal Lithium-ion Battery (92 Wh, 8A)
BAT-96WHR	High Power Internal Lithium-ion Battery (92 Wh, 10 A); ONA-MF2-PEM Power Expansion Module (Additional Lithium-Ion Battery)
ONA-MF2-PEM	Power Expansion Module (Additional Lithium-Ion Battery)
G700050701 ONA800-T-HARDCASE	OneAdvisor Hard carrying case with wheels for full sized modules (large with dividers)
G710550324	External Battery Charger
JD70050342	Hard Carrying Case With Wheels
EBACKPACK-CASE1, ONA800-T-SOFTCASE	Backpack/large soft carrying case for T-BERD/MTS mainframes and OneAdvisor 800
ONA-800A-BP	Backpack for RF walk test with antenna hook
MP-60A	USB Optical Power Meter with Accessories
ONA-800A-BC	OneAdvisor Back Cover
ONA-800A-HN EHARNES	OneAdvisor Harness
C2K-EMPTYMOD	Empty module to cover an unused expansion port
ONA-800A-DISPL ONA-800A-DISP-F ONA-800A-DISP-T	OneAdvisor Display
ONA-PMVFL	Power Meter and VFL Mainframe Module for OneAdvisor 800

Managing your workforce, tasks and test data

Test Process Automation (TPA) allows your team to deliver expert-level test results and close projects on the first try, every time. TPA is a closed loop test system that optimizes workflows, eliminates manual, error prone work and automates immediate data reporting for job close out, team progress updates and network health analytics. Execute jobs efficiently to ensure high quality network builds, rapid turn-up/activation, and enhanced operational visibility.



VIAVI Care Support Plans




Increase your productivity for up to 5 years with optional VIAVI Care Support Plans:

- Maximize your time with on-demand training, priority technical application support and rapid service.
- Maintain your equipment for peak performance at a low, predictable cost.

Plan availability depends on product and region. Not all plans are available for each product or in every region. To find out which VIAVI Care Support Plan options are available for this product in your region, contact your local representative or visit: viavisolutions.com/viavicareplan

Features

*5-year plans only

Plan	Objective	Technical Assistance	Factory Repair	Priority Service	Self-paced Training	5 Year Battery and Bag Coverage	Factory Calibration	Accessory Coverage	Express Loaner
 BronzeCare	Technician Efficiency	Premium	✓	✓	✓				
 SilverCare	Maintenance & Measurement Accuracy	Premium	✓	✓	✓	✓*	✓		
 MaxCare	High Availability	Premium	✓	✓	✓	✓*	✓	✓	✓



Contact Us **+1 844 GO VIAVI**
(+1 844 468 4284)

To reach the VIAVI office nearest you,
visit viavisolutions.com/contact

© 2023 VIAVI Solutions Inc.
Product specifications and descriptions in this document are subject to change without notice.
Patented as described at
viavisolutions.com/patents
ona800-ds-xpf-nse-ae
30191107 910 1023

viavisolutions.com